

E:\Projects\USA\NC\2023\101_Duck\VulnerabilityAnalysis\aprx\2023_Impact_Analysis.aprx







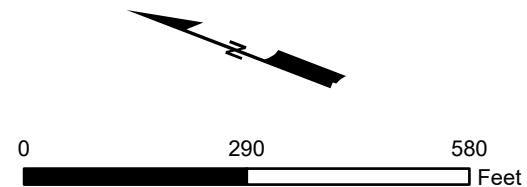
Continue on Figure No. 02

Notes:

1. 2018 Base Map Imagery provided by Dare County. Aerial Imagery overlay collected by CPE on 5/22/2023.
2. Preliminary Building footprint provided by Dare County based on 2022 imagery. The dataset is considered preliminary due to on-going QA/QC review process by the County.
3. Oceanfront pools were delineated by CPE based on aerial Imagery collected on 5/22/2023.

Legend:

-  Modeled Isabel Storm - 2019 Shoreline Conditions
-  Modeled Isabel Storm - 2023 Shoreline Conditions
-  Structures Impacted - 2023 Shoreline Conditions
-  Structure Footprint



TITLE:

2023 Impact Analysis Town of Duck Duck, North Carolina



**COASTAL PROTECTION ENGINEERING
OF NORTH CAROLINA, INC.**
4038 MASONBORO LOOP ROAD
WILMINGTON, NC 28409
PH. (910) 399-1905



Date: 10/11/23

By: CM

Figure No. 1

E:\Projects\USA\NC\Dare\2023\101 Duck Vulnerability Analysis\aprx\2023 Impact Analysis.aprx

Continue on Figure No. 01



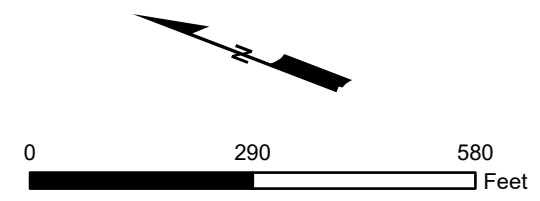
Continue on Figure No. 03

Notes:

1. 2018 Base Map Imagery provided by Dare County. Aerial Imagery overlay collected by CPE on 5/22/2023.
2. Preliminary Building footprint provided by Dare County based on 2022 imagery. The dataset is considered preliminary due to on-going QA/QC review process by the County.
3. Oceanfront pools were delineated by CPE based on aerial Imagery collected on 5/22/2023.

Legend:

- Modeled Isabel Storm - 2019 Shoreline Conditions
- Modeled Isabel Storm - 2023 Shoreline Conditions
- Structures Impacted - 2023 Shoreline Conditions
- Structure Footprint



TITLE:

**2023 Impact Analysis
Town of Duck
Duck, North Carolina**



**COASTAL PROTECTION ENGINEERING
OF NORTH CAROLINA, INC.**
4038 MASONBORO LOOP ROAD
WILMINGTON, NC 28409
PH. (910) 399-1905



Date: 10/11/23

By: CM

Figure No. 2

E:\Projects\USAN\NC\2023\101 Duck Vulnerability Analysis\aprx\2023 Impact Analysis.aprx

Continue on Figure No. 02



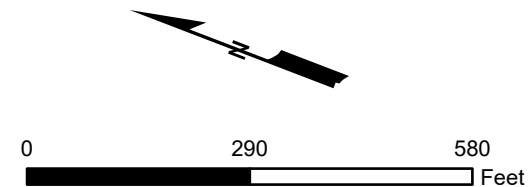
Continue on Figure No. 04

Notes:

1. 2018 Base Map Imagery provided by Dare County. Aerial Imagery overlay collected by CPE on 5/22/2023.
2. Preliminary Building footprint provided by Dare County based on 2022 imagery. The dataset is considered preliminary due to on-going QA/QC review process by the County.
3. Oceanfront pools were delineated by CPE based on aerial Imagery collected on 5/22/2023.

Legend:

- Modeled Isabel Storm - 2019 Shoreline Conditions
- Modeled Isabel Storm - 2023 Shoreline Conditions
- Structures Impacted - 2023 Shoreline Conditions
- Structure Footprint



TITLE:

2023 Impact Analysis Town of Duck Duck, North Carolina



**COASTAL PROTECTION ENGINEERING
OF NORTH CAROLINA, INC.**
4038 MASONBORO LOOP ROAD
WILMINGTON, NC 28409
PH. (910) 399-1905



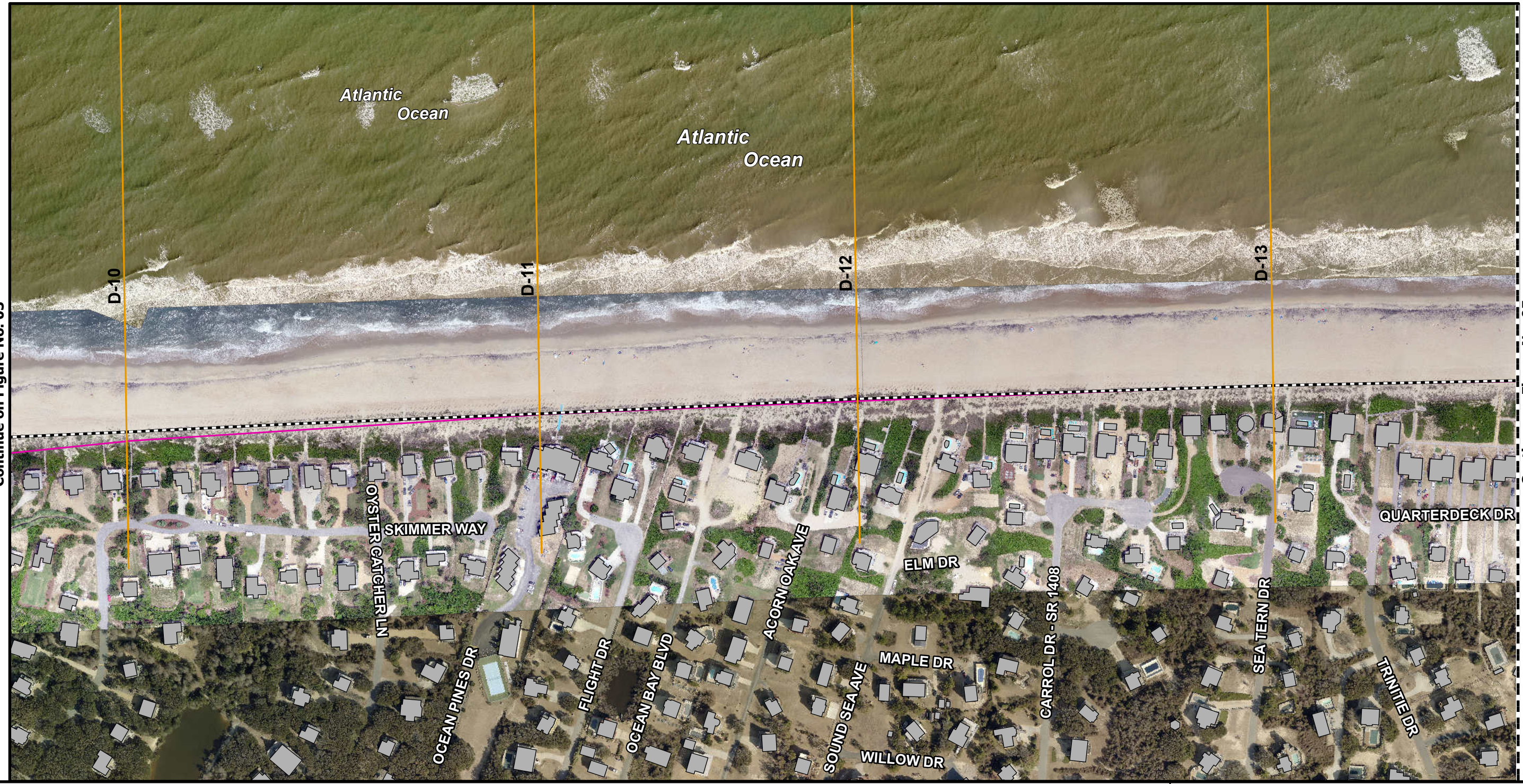
Date: 10/11/23

By: CM

Figure No. 3

E:\Projects\USA\NC\Dare\2023\101_DuckVulnerabilityAnalysis\aprx\2023_Impact_Analysis.aprx

Continue on Figure No. 03



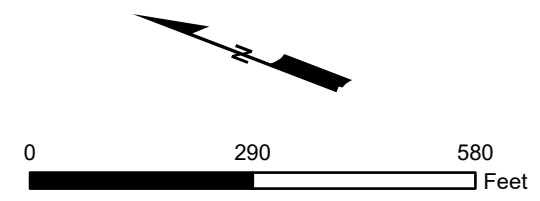
Continue on Figure No. 05

Notes:

1. 2018 Base Map Imagery provided by Dare County. Aerial Imagery overlay collected by CPE on 5/22/2023.
2. Preliminary Building footprint provided by Dare County based on 2022 imagery. The dataset is considered preliminary due to on-going QA/QC review process by the County.
3. Oceanfront pools were delineated by CPE based on aerial Imagery collected on 5/22/2023.

Legend:

- Modeled Isabel Storm - 2019 Shoreline Conditions
- Modeled Isabel Storm - 2023 Shoreline Conditions
- Structures Impacted - 2023 Shoreline Conditions
- Structure Footprint



TITLE:

**2023 Impact Analysis
Town of Duck
Duck, North Carolina**



**COASTAL PROTECTION ENGINEERING
OF NORTH CAROLINA, INC.**
4038 MASONBORO LOOP ROAD
WILMINGTON, NC 28409
PH. (910) 399-1905



Date: 10/11/23	By: CM	Figure No. 4
----------------	--------	--------------

E:\Projects\USA\NC\2023\101_DuckVulnerabilityAnalysis\aprx\2023_Impact_Analysis.aprx

Continue on Figure No. 04



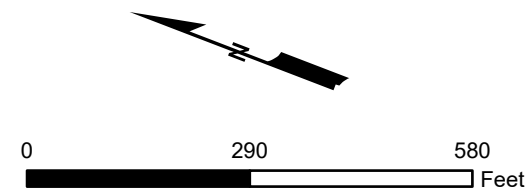
Continue on Figure No. 06

Notes:

1. 2018 Base Map Imagery provided by Dare County. Aerial Imagery overlay collected by CPE on 5/22/2023.
2. Preliminary Building footprint provided by Dare County based on 2022 imagery. The dataset is considered preliminary due to on-going QA/QC review process by the County.
3. Oceanfront pools were delineated by CPE based on aerial Imagery collected on 5/22/2023.

Legend:

- Modeled Isabel Storm - 2019 Shoreline Conditions
- Modeled Isabel Storm - 2023 Shoreline Conditions
- Structures Impacted - 2023 Shoreline Conditions
- Structure Footprint



TITLE:

2023 Impact Analysis Town of Duck Duck, North Carolina



**COASTAL PROTECTION ENGINEERING
OF NORTH CAROLINA, INC.**
4038 MASONBORO LOOP ROAD
WILMINGTON, NC 28409
PH. (910) 399-1905



Date: 10/11/23

By: CM

Figure No. 5

E:\Projects\USA\NC\ Dare\2023\101_Duck\Vulnerability\Analysis\aprx\2023_Impact_Analysis.aprx

Continue on Figure No. 05



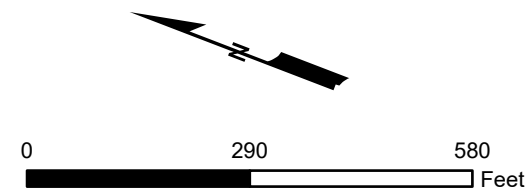
Continue on Figure No. 07

Notes:

1. 2018 Base Map Imagery provided by Dare County. Aerial Imagery overlay collected by CPE on 5/22/2023.
2. Preliminary Building footprint provided by Dare County based on 2022 imagery. The dataset is considered preliminary due to on-going QA/QC review process by the County.
3. Oceanfront pools were delineated by CPE based on aerial Imagery collected on 5/22/2023.

Legend:

- Modeled Isabel Storm - 2019 Shoreline Conditions
- Modeled Isabel Storm - 2023 Shoreline Conditions
- Structures Impacted - 2023 Shoreline Conditions
- Structure Footprint



TITLE:

2023 Impact Analysis Town of Duck Duck, North Carolina



**COASTAL PROTECTION ENGINEERING
OF NORTH CAROLINA, INC.**
4038 MASONBORO LOOP ROAD
WILMINGTON, NC 28409
PH. (910) 399-1905



Date: 10/11/23

By: CM

Figure No. 6

E:\Projects\USAN\NC\2023\101_Duck\VulnerabilityAnalysis\aprx\2023_Impact_Analysis.aprx

Continue on Figure No. 06



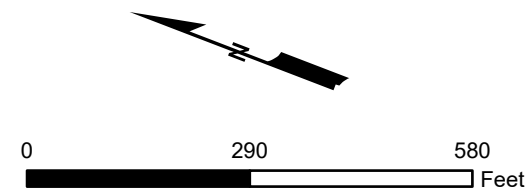
Continue on Figure No. 08

Notes:

1. 2018 Base Map Imagery provided by Dare County. Aerial Imagery overlay collected by CPE on 5/22/2023.
2. Preliminary Building footprint provided by Dare County based on 2022 imagery. The dataset is considered preliminary due to on-going QA/QC review process by the County.
3. Oceanfront pools were delineated by CPE based on aerial Imagery collected on 5/22/2023.

Legend:

- Modeled Isabel Storm - 2019 Shoreline Conditions
- Modeled Isabel Storm - 2023 Shoreline Conditions
- Structures Impacted - 2023 Shoreline Conditions
- Structure Footprint



TITLE:

2023 Impact Analysis Town of Duck Duck, North Carolina



**COASTAL PROTECTION ENGINEERING
OF NORTH CAROLINA, INC.**
4038 MASONBORO LOOP ROAD
WILMINGTON, NC 28409
PH. (910) 399-1905



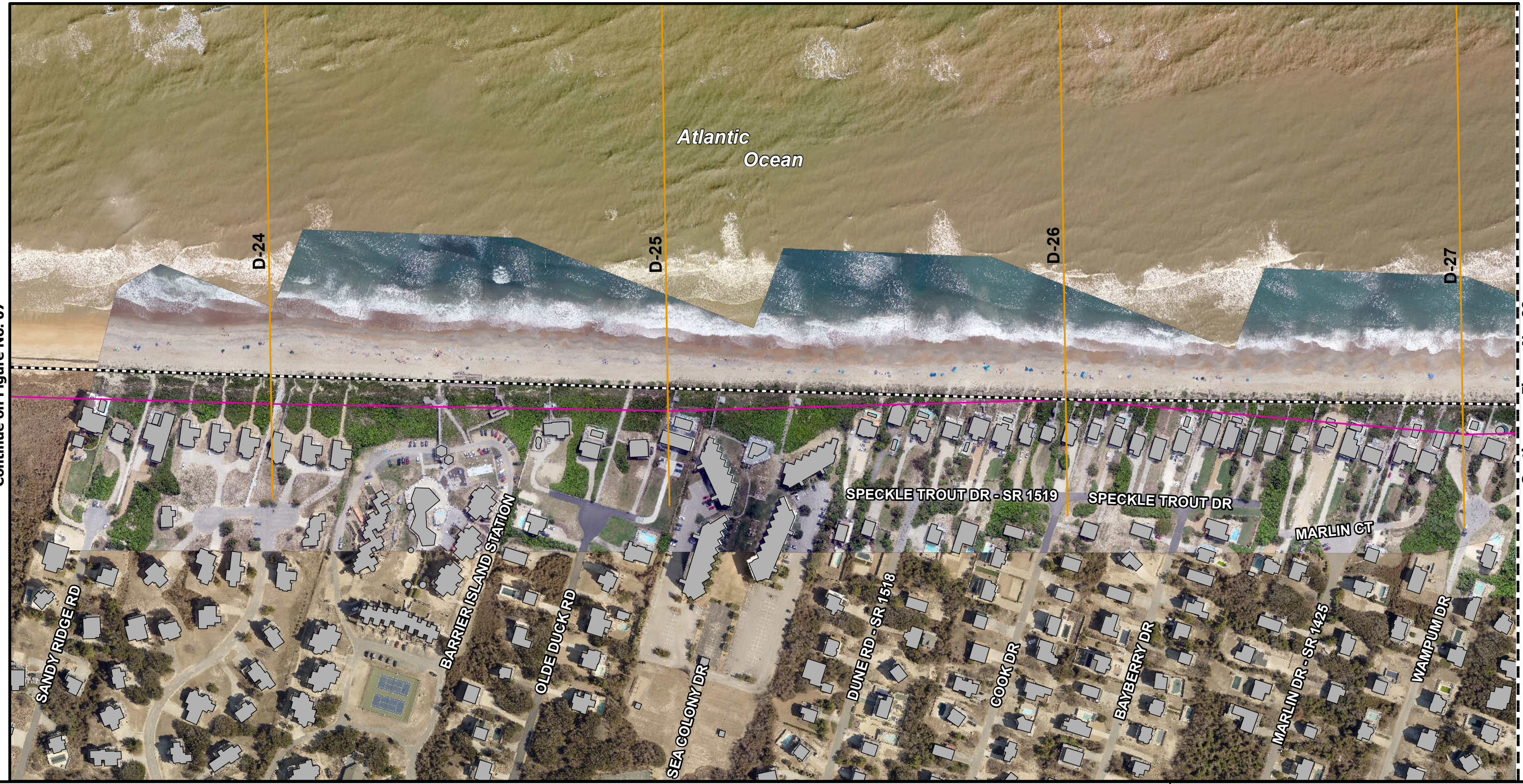
Date: 10/11/23

By: CM

Figure No. 7

E:\Projects\USA\NC\ Dare\2023\101 Duck Vulnerability Analysis\aprx\2023 Impact Analysis.aprx

Continue on Figure No. 07



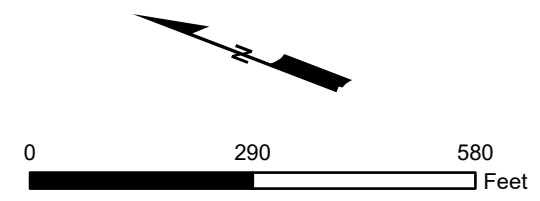
Continue on Figure No. 09

Notes:

1. 2018 Base Map Imagery provided by Dare County. Aerial Imagery overlay collected by CPE on 5/22/2023.
2. Preliminary Building footprint provided by Dare County based on 2022 imagery. The dataset is considered preliminary due to on-going QA/QC review process by the County.
3. Oceanfront pools were delineated by CPE based on aerial Imagery collected on 5/22/2023.

Legend:

- Modeled Isabel Storm - 2019 Shoreline Conditions
- Modeled Isabel Storm - 2023 Shoreline Conditions
- Structures Impacted - 2023 Shoreline Conditions
- Structure Footprint



TITLE:

**2023 Impact Analysis
Town of Duck
Duck, North Carolina**



**COASTAL PROTECTION ENGINEERING
OF NORTH CAROLINA, INC.**
4038 MASONBORO LOOP ROAD
WILMINGTON, NC 28409
PH. (910) 399-1905



Date: 10/11/23

By: CM

Figure No. 8

E:\Projects\USA\NC\ Dare\2023\101 Duck Vulnerability Analysis\aprx\2023 Impact Analysis.aprx

Continue on Figure No. 08



Continue on Figure No. 10

Notes:

1. 2018 Base Map Imagery provided by Dare County. Aerial Imagery overlay collected by CPE on 5/22/2023.
2. Preliminary Building footprint provided by Dare County based on 2022 imagery. The dataset is considered preliminary due to on-going QA/QC review process by the County.
3. Oceanfront pools were delineated by CPE based on aerial Imagery collected on 5/22/2023.

Legend:

- Modeled Isabel Storm - 2019 Shoreline Conditions
- Modeled Isabel Storm - 2023 Shoreline Conditions
- Structures Impacted - 2023 Shoreline Conditions
- Structure Footprint

TITLE:

**2023 Impact Analysis
Town of Duck
Duck, North Carolina**



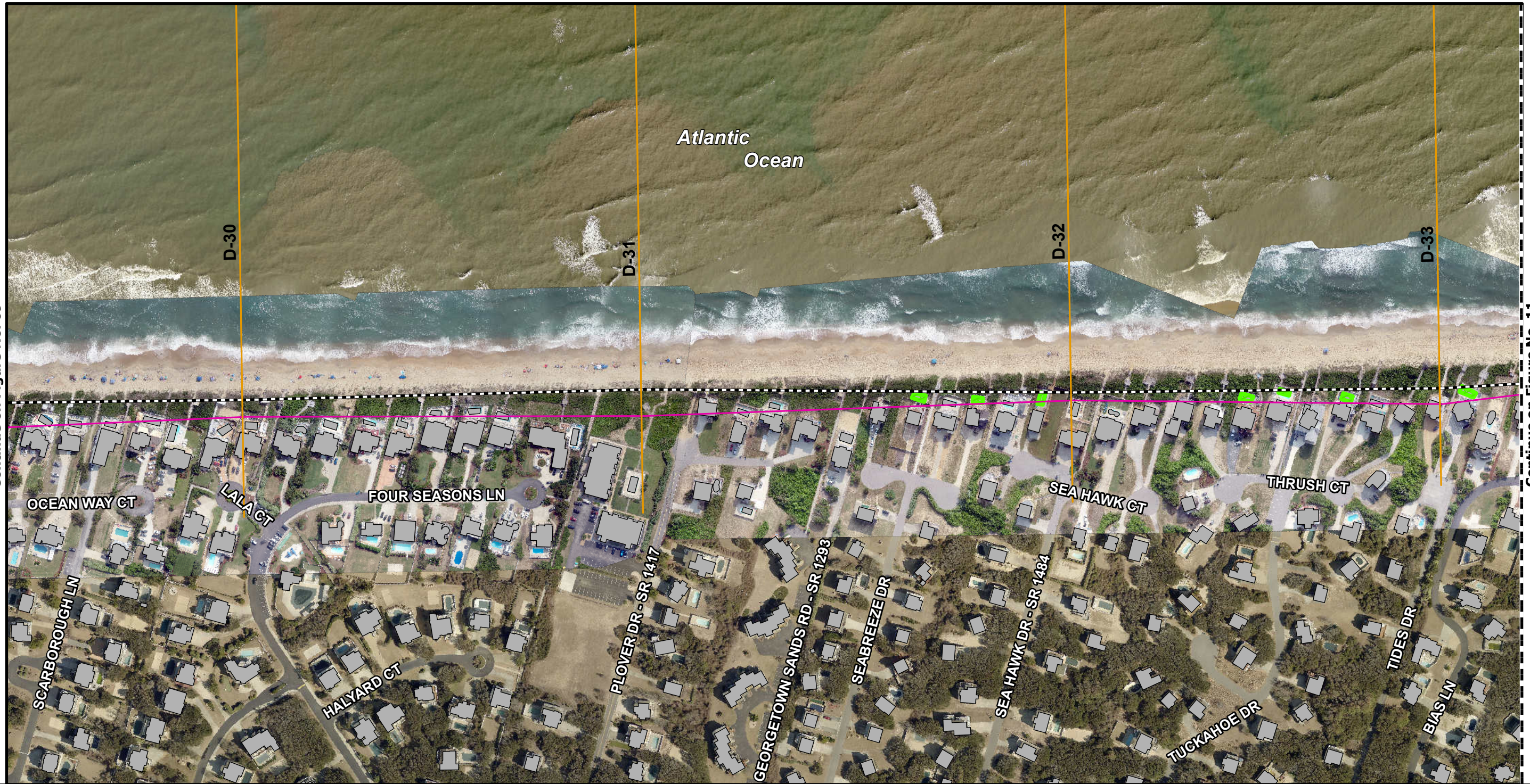
**COASTAL PROTECTION ENGINEERING
OF NORTH CAROLINA, INC.**
4038 MASONBORO LOOP ROAD
WILMINGTON, NC 28409
PH. (910) 399-1905



Date: 10/11/23	By: CM	Figure No. 9
----------------	--------	--------------

E:\Projects\USA\NC\ Dare\2023\101 Duck Vulnerability Analysis\aprx\2023 Impact Analysis.aprx

Continue on Figure No. 09



Continue on Figure No. 11

Notes:

1. 2018 Base Map Imagery provided by Dare County. Aerial Imagery overlay collected by CPE on 5/22/2023.
2. Preliminary Building footprint provided by Dare County based on 2022 imagery. The dataset is considered preliminary due to on-going QA/QC review process by the County.
3. Oceanfront pools were delineated by CPE based on aerial Imagery collected on 5/22/2023.

Legend:

- Modeled Isabel Storm - 2019 Shoreline Conditions
- Modeled Isabel Storm - 2023 Shoreline Conditions
- Structures Impacted - 2023 Shoreline Conditions
- Structure Footprint

TITLE:

2023 Impact Analysis Town of Duck Duck, North Carolina



**COASTAL PROTECTION ENGINEERING
OF NORTH CAROLINA, INC.**
4038 MASONBORO LOOP ROAD
WILMINGTON, NC 28409
PH. (910) 399-1905



Date: 10/11/23

By: CM

Figure No. 10

E:\Projects\USA\NC\ Dare\2023\101_Duck\Vulnerability\Analysis\aprx\2023_Impact_Analysis.aprx

Continue on Figure No. 10

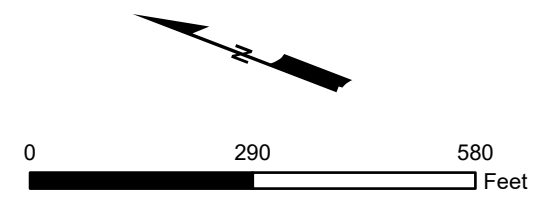


Notes:

1. 2018 Base Map Imagery provided by Dare County. Aerial Imagery overlay collected by CPE on 5/22/2023.
2. Preliminary Building footprint provided by Dare County based on 2022 imagery. The dataset is considered preliminary due to on-going QA/QC review process by the County.
3. Oceanfront pools were delineated by CPE based on aerial Imagery collected on 5/22/2023.

Legend:

- Modeled Isabel Storm - 2019 Shoreline Conditions
- Modeled Isabel Storm - 2023 Shoreline Conditions
- Structures Impacted - 2023 Shoreline Conditions
- Structure Footprint



TITLE: 2023 Impact Analysis Town of Duck Duck, North Carolina		
COASTAL PROTECTION ENGINEERING OF NORTH CAROLINA, INC. 4038 MASONBORO LOOP ROAD WILMINGTON, NC 28409 PH. (910) 399-1905		
Date: 10/11/23	By: CM	Figure No. 11