

## WASTE & RECYCLING

### Trash

May 1 - Sept. 30:  
Mondays & Fridays

Oct. 1 - April 30:  
Mondays

Roll out **no earlier** than 5 pm the day before collection OR **no later** than 5 am the day of collection.



### Recycling

May 1 - Oct. 31:  
every Monday

Nov. 1 - April 30  
First and third  
Monday of the  
month

Roll back **no later** than 10 pm the day of collection.



## RENTAL PROPERTY

Rental home names can be fun, quirky, and a memorable part of your trip, but can you answer these questions?

Who is your rental company?

Do you have their phone number?

What is the property address including: street number/ unit number, and street name?

Do you know where the fire extinguisher is?



## FIRE SAFETY



Fireworks, sparklers, beach fires, and bonfires are **not** permitted.

### Grill Safety



Grilling on decks or near vegetation is **highly** discouraged.



Properly maintain grills.

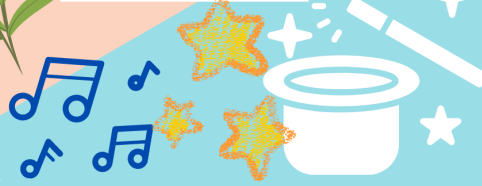


Make sure charcoal ashes are cool before disposal.



## TOWN EVENTS

The Town offers a variety of free, family-friendly events all year long!



## BIKE SAFETY



Ride with traffic.



Wear a helmet.



Be bright at night.



Obey traffic signals and signs.



Look before entering traffic and changing lanes.



left



stop



right

Use hand signals. Remember to signal with the left arm.

**Bicycles cannot be operated on the boardwalk.**

Confident cyclists should use the bike lane!



## PEDESTRIAN SAFETY



Be bright at night.



Watch for turning cars.



Walk facing traffic.



Make eye contact with drivers before crossing.



Pull the plug and pay attention!



Be careful in parking lots.



Use the marked crosswalks!

## LOVE THE BEACH RESPECT THE OCEAN



Text **OBXBEACHCONDITIONS** to **77295** to sign up for beach-related weather and ocean condition alerts.

**ALWAYS SWIM NEAR A LIFEGUARD!**

When it comes to dangerous rip currents and storms, it is always important to **KNOW BEFORE YOU GO.**



## LEAVE NO TRACE

**Pack it in, pack it out.**



Take **EVERYTHING** with you when you leave the beach and Town Park including **ALL** trash, leftover food, litter, and beach equipment (tents, coolers, chairs, etc.)



Respect wildlife and be courteous to other visitors.



Help us preserve and protect our natural environment.



Unattended items should not be left on the beach between 5 p.m. and 8 a.m. or they may be removed as litter.

## GOLF CARTS/ LSVs

Golf carts and Low Speed Vehicles (LSVs) look similar, but they are different!



### GOLF CARTS

- Cannot exceed **20 mph**
- Can be used on side streets
- Can be used to cross Duck Rd at a right angle
- Cannot operate along Duck Road, the Duck Trail, boardwalk, pathways, sidewalks, bike lanes, or shoulders

### LOW SPEED VEHICLES

- "Street legal": registered electric vehicles that meet federal and state standards for motor vehicles
- Can operate on Duck Rd and all side streets where the posted speed limit is **35 mph** or less
- Cannot operate along the Duck Trail, the boardwalk, pathways, sidewalks, bike lanes, or shoulders



**NC LAW REQUIRES THE USE OF SEAT BELTS AND CHILD SAFETY RESTRAINTS!**

## HOLES ON THE BEACH



Digging holes on the beach is **EXTREMELY** dangerous and can be deadly.



Beach holes, regardless of size, pose a risk to other beach-goers, lifeguards, wildlife, and public safety.



Leaving no trace includes beach holes. If you dig holes on the beach, **FILL THEM IN WHEN YOU ARE DONE!**



Leave **ONLY** footprints when you leave the beach.



# TOP 10 TIPS

To keep you,  
your family,  
friends, guests  
and our  
environment  
safe and  
protected.