

DOCUMENT 00901

ADDENDUM NUMBER 2

Date: 19 August 2010

Project: Duck Town Hall Complex

Owner: Duck Town Hall
Town Manager: Mr. Chris Layton
1240 Duck Road
Duck, NC 27949

Architect: Tymoff+Moss Architects
Contact: Barry Moss
512 Botetourt Street
Norfolk, VA 23510

To: Prospective Bidders

This Addendum forms a part of the Contract Documents and modifies the Bidding Documents dated 22 July 2010, with amendments and additions noted below.

Acknowledge receipt of this Addendum in the space provided in the Bid Form. Failure to do so may disqualify the Bidder.

This Addendum consists of three (3) pages.

GENERAL

Bid Date (CHANGE)-Please note that the Instructions to Bidders shall be changed as follows: Bids are now due on Friday, August 27th, at 2:00 pm and will be opened by the Town of Duck following receipt of all bids.

CHANGES TO THE PROJECT MANUAL (SPECIFICATIONS)

- 085414 (CHANGE) ULTREX CLAD WOOD DOUBLE HUNG WINDOWS
Replace with revised Specification section (attached)
- 081423 (CHANGE) ULTREX ALUMINUM CLAD WOOD COMMERCIAL DOORS
Replace with revised Specification section (attached)

CHANGES TO THE DRAWINGS

1. (CHANGE) Sheet A9.1

Doors 101A, 101B, 101C, 201A, 201B, 202B, 206B to be 8'-0" in height.

Panic hardware and closers are provided by door manufacturer on all exterior doors.

Door Hardware supplier to provide closers on doors: 104, 205, 207, 208, 209, 211, 212, 302, 303

Door Hardware supplier to provide panic hardware on door 302.

Door Hardware supplier to provide mop/kick plates on doors: 208, 207, 209,
2. (CHANGE) Sketch supplement to Sheet A7.1

See revised interior elevations 4/A7.2, 5/A7.2, 8/A7.2, 9/A7.2 (attached). Lavatories to be integrated into solid surface countertops per details on sheet A9.6. There are no wall mounted sinks.

Provide a countertop mounted soap dispenser in lieu of the previously specified wall mounted soap dispenser Bobrick #B-82216 in satin nickel.

3. (CLARIFICATION) Sketch supplement to Sheet A7.2

See additional interior elevations 14/A7.2 and 15/A7.2 for kitchenette casework in Conference 102 and Break Room 204 (sketch attached)

See Specification Section 06402 for information on cabinetry and solid surface material:

Cabinetry: Merillat Masterpiece Fine Cabinetry, Martel door style, Maple. Finish to be decided from manufacturer's full range. Provide heavy duty self-closing (quiet close) drawer hardware. Provide pulls for cabinets and drawers Hafele #107.18.612 brushed nickel.

SECTION 08 54 14

ULTREX® CLAD WOOD DOUBLE HUNG WINDOW

PART 1 GENERAL

1.1 SECTION INCLUDES

- A. Ultrex® clad wood double hung window complete with hardware, glazing, weather strip, insect screen, removable grilles, grilles-between-the glass, jamb extension, and standard or specified anchors, trim and attachments.
- B. Ultrex® clad wood double hung bay, bow window complete with hardware, glazing, weather strip, insect screen, removable grilles, grilles-between-the glass, simulated divided lite, jamb extension, head / seat board, and standard or specified anchors, trim and attachments.

1.2 RELATED SECTIONS

- A. Section 01 33 23—Submittal Procedures: Shop Drawings, Product Data, and Samples.
- B. Section 01 62 00—Product Options
- C. Section 01 65 00—Product Delivery
- D. Section 01 66 00—Storage and Handling requirements
- E. Section 01 71 00—Examination and Preparation
- F. Section 01 73 00—Execution
- G. Section 01 74 00—Cleaning and Waste Management
- H. Section 01 76 00—Protecting Installed Construction
- I. Section 06 22 00—Millwork: Wood trim other than furnished by window manufacturer
- J. Section 07 92 00—Joint Sealants: Sill sealant and perimeter caulking
- K. Section 09 90 00—Paints and Coatings: Paint or stain other than factory applied finish

1.3 REFERENCES

- A. American Society for Testing and Materials (ASTM):
 - 1. E 283: Standard Test Method for Rate of Air Leakage Through Exterior Windows, Curtain Walls, and Doors.
 - 2. E 330: Standard Test Method for Structural Performance of Exterior Windows, Curtains Walls, and Doors by Uniform Static Air Pressure Difference.
 - 3. E 547: Standard Test Method for Water Penetration of Exterior Windows, Curtain Walls, and Doors by Cyclic Static Air Pressure Differential.
 - 4. E 774: Specification for Sealed Insulated Glass Units.
 - 5. E 1886: Standard Test Method for Performance of Exterior Windows, Curtain Walls, Doors, and Storm Shutters Impacted by Missile(s) and Exposed to Cyclic Pressure Differentials
 - 6. E 1996: Standard Specifications for Performance of Exterior Windows, Curtain Walls, Doors and Impact Protective Systems Impacted by Windborne Debris in Hurricanes
 - 7. C 1036: Standard Specification for Flat Glass.
- B. Window and Door Manufactures Association (WDMA): I.S.4: Industry Standard for Water Repellent Preservative Treatment for Millwork.
- C. Sealed Insulating Glass Manufactures Association / Insulating Glass Certification Council (SIGMA / IGCC).
- D. American Architectural Manufacturers Association / Window and Door Manufacturers Association (AAMA / WDMA):
 - 1. ANSI/AAMA/NWDA 101 / I.S.2-97: Voluntary Specifications for Aluminum, Vinyl (PVC) and Wood Windows and Glass Doors.

2. 101/I.S. 2/NAFS-02: Voluntary Performance Specification for Windows, Skylights and Glass Doors.
3. AAMA/WDMA/CSA 101/I.S.2/A440-05: Standard/ Specification for windows, doors, and unit skylights.

- E. Window and Door Manufacturers Association (WDMA): Hallmark Certification Program.
- F. American Architectural Manufacturers Association (AAMA): 613: Voluntary Performance Requirements and Test Procedures for Organic Coatings on Plastic Profiles.
- G. National Fenestration Rating Council (NFRC): 101: Procedure for Determining Fenestration Product Thermal Properties.

1.4 SYSTEM DESCRIPTION

- A. Impact Zone 3 Certification Requirements:
1. Window Units shall be designed to comply with 101/I.S.2-97, 101/I.S. 2/NAFS-02, and 101/I.S.2/A440-05
 - a. Double Hung: H-LC +55/-65 rating
 - b. Transom: F-LC +55/-65 rating
 - c. Picture: F-LC +55/-65 rating
 2. Air leakage shall not exceed the following when tested at 1.57 psf according to ASTM E 283: 0.30 cfm per square foot of frame.
 3. No water penetration shall occur when units are tested at the following pressure according to ASTM E 547:
 - a. Double Hung: 8.25 psf
 - b. Transom: 8.25 psf
 - c. Picture: 8.25 psf
 4. Units shall be designed to comply with ASTM E330 for structural performance when tested at the following pressures:
 - a. Double Hung: +82.5/-97.5 psf
 - b. Transom: +82.5/-97.5 psf
 - c. Picture: +82.5/-97.5 psf
 5. Missile Impact at Missile Level D complies with ASTM E1886-05, ASTM E 1886-06, ASTM E1996-02, ASTM E1996-05, ASTM E1996-06.
 6. Impact Pressure Cycling at +55/-65 psf, complies with ASTM E1886-02, ASTM E1886-05, ASTM E1886-06, ASTM E1996-02, ASTM E1996-05, ASTM E1996-06.
 7. Thermal Unit "U" Value, .35 or less, complies with NFRC Certification.
 8. Forced Entry Resistance, complies with ASTM F588-04.

1.5 SUBMITTALS

- A. Shop Drawings: Submit shop drawings under provisions of Section 01 33 23.
- B. Product Data: Submit catalog data under provisions of Section 01 33 23.
- C. Samples:
1. Submit corner section under provisions of Section 01 33 23.
 2. Include glazing system, quality of construction, and specified finish.
- D. Quality Control Submittals: Submit manufacturer's certifications indicating compliance with specified performance and design requirements under provisions of Section 01 33 23.

1.6 QUALITY ASSURANCE

- A. Regulatory Requirements: Emergency Egress or Rescue: Comply with requirements for sleeping units of 2009 North Carolina Building Code.

1.7 DELIVERY

- A. Comply with provisions of Section 01 65 00.
- B. Deliver in original packaging and protect from weather.

1.8 STORAGE AND HANDLING

- A. Prime or seal wood surfaces, including surface to be concealed by wall construction, if more than thirty (30) days will expire between delivery and installation.
- B. Store window units in an upright position in a clean and dry storage area above ground and protect from weather under provisions of Section 01 66 00.

1.9 WARRANTY

- A. Windows shall be warranted to be free from defects in manufacturing, materials, and workmanship for a period of ten (10) years from purchase date.
- B. Window glass shall be warranted to be free from defects in manufacturing, materials and workmanship for period of twenty (20) years from the purchase date.

PART 2 PRODUCTS

2.1 MANUFACTURED UNITS

- A. Description: Ultrex® Double Hung (and related stationary or picture units) as manufactured by Integrity Windows and Doors, Fargo, North Dakota. Operating sash tilt to interior for cleaning or removal.
- B. Description: Ultrex® Double Hung Bay, Bow unit, (and related stationary or picture units) as manufactured by Integrity Windows and Doors, Fargo, North Dakota or Roanoke, Virginia.

2.2 FRAME DESCRIPTION

- A. Interior: Clear pine interior surfaces.
 - 1. Kiln dried to a moisture content no greater than twelve (12) percent at the time of fabrication.
 - 2. Water repellent preservative treated in accordance with ANSI / NWWDA I.S.4-94.
- B. Exterior: Fiberglass reinforced plastic (Ultrex®), 0.075 inch (2 mm) thick.
- C. Frame width: 4-9/16 inches (116 mm).

2.3 SASH DESCRIPTION

- A. Clear pine interior surfaces.
 - 1. Kiln dried to a moisture content no greater than twelve (12) percent at the time of fabrication.
 - 2. Water repellent preservative treated in accordance with ANSI / NWWDA I.S.4-94.
- B. Exterior: Pultruded reinforced fiberglass (Ultrex®), 0.070 – 0.075 inch (2 mm) thick.
- C. Composite sash thickness: 1-9/16 inches (40 mm).

2.4 GLAZING

- A. Select quality complying with ASTM C 1036. Insulating glass SIGMA/IGCC certified to performance level CBA when tested in accordance with ASTM E 774.
- B. Glazing method: 3/4 inch (19 mm) Insulated glass.
- C. Glass type: LoE² - 272® Argon gas

- D. Glazing seal: Silicone bedding at exterior and interior.
- E. Optional Impact glazing zone for winds up to 130 miles per hour. Glass is laminated insulated Low EII with Argon, consisting of annealed or tempered glass to the exterior and laminated glass to the interior. The laminated glass is made up of glass with either a SGP or PVB laminate layer between. The interior and exterior glazing compound is silicone, in a sandwich style glazing system.

2.5 FINISH

- A. Exterior: Factory baked on acrylic urethane. Color: Stone White
- B. Interior: White interior factory finish.

2.6 HARDWARE

- A. Balance System: Coil spring block and tackle with nylon cord and glass filled nylon shoe and steel locking clutch.
- B. Jamb Track: Pultruded extrusion.
- C. Lock: High pressure zinc die-cast cam lock and keeper. Finish: Phosphate coated and electrostatically painted.
 - 1. Color: White.
- D. Tilt latches: Spring loaded latches for release of sash located at checkrail.
 - 1. Color: White.

2.7 WEATHER STRIP

- A. Frame, sash stiles, and meeting rails, sealed with flexible bulb gasket. Bottom and top rails sealed with flexible leaf gasket.

2.8 JAMB EXTENSION

- A. Furnish jamb extension 6-9/16 (167 mm) factory installed for all but 2x8 Shear walls. Furnish jamb extensions in the field for 2x8 walls, shipped loose
- B. Finish: Bare wood; White interior factory finish.

2.9 INSECT SCREENS

- A. Factory installed full screen. Screen mesh, 18 by 16: Charcoal fiberglass.
- B. Aluminum frame finish: White

2.10 SIMULATED DIVIDED LITES (SDL)

- A. 7/8" (22 mm) wide. No internal spacer bar.
 - 1. Exterior muntins: Extruded Ultrex. Rectangular lite cut pattern per elevations.
 - a. Color: Stone White
- B. Interior muntins: White interior factory finish.

2.11 ACCESSORIES AND TRIM

- A. Installation Accessories:
 - 1. Factory installed vinyl nailing fin / drip cap at head and side jambs.
 - 2. Installation brackets: Brackets for 6-9/16 inch (167 mm) jambs.

3. Mullion kit: Standard mullion kit for field assembly of related units available in horizontal, vertical, round top over double hung and 2-wide and/or 2-high configurations. Kit includes: Instructions, aluminum pins, filler blocks, wood mullion tie, sealant foam tape, interior mullion trim, mull tee, related screws and nailing fin connectors.
4. Structural mullion kit: Structural mullion kit for field assembly of related units available in horizontal, vertical, round top over double hung and 2-wide and/or 2-high configurations. Kit includes: Instructions, reinforcement member, aluminum pins, filler blocks, wood mullion tie, sealant foam tape, interior mullion trim, mull tee, related screws, nailing fin connectors and structural brackets.
5. Installation clips standard with nailing fin on impact glazed windows.

PART 3 EXECUTION

3.1 EXAMINATION

- A. Verification of Conditions: Before Installation, verify openings are plumb, square, and of proper dimension as required in Section 01 71 00. Report frame defects or unsuitable conditions to the General Contractor before proceeding.
- B. Acceptance of Conditions: Beginning of installation confirms acceptance of existing conditions.

3.2 INSTALLATION

- A. Comply with Section 01 73 00.
- B. Assemble and install window unit according to manufacturer's instructions and reviewed shop drawings.
- C. Install sealant and related backing materials at perimeter of unit or assembly in accordance with Section 07 92 00 Joint Sealants. Do not use expansive foam sealant.
- D. Install accessory items as required.
- E. Use finish nails to apply wood trim and mouldings.

3.3 CLEANING

- A. Remove visible labels and adhesive residue according to manufacturer's instructions.
- B. Leave windows and glass in a clean condition. Final cleaning as required in Section 01 74 00.

3.4 PROTECTING INSTALLED CONSTRUCTION

- A. Comply with Section 01 76 00.
- B. Protect windows from damage by chemicals, solvents, paint, or other construction operations that may cause damage.

END OF SECTION

SECTION 08 14 23

ALUMINUM CLAD WOOD COMMERCIAL DOOR

PART 1 GENERAL

1.1 SECTION INCLUDES

- A. Aluminum clad wood commercial door and frame, complete with hardware, glazing, weather strip, jamb extension, and standard or specified anchors, trim, and attachments.

1.2 RELATED SECTIONS

- A. Section 01 33 23—Submittal Procedures: Shop Drawings, Product Data, and Samples
- B. Section 01 62 00—Product Options
- C. Section 01 63 00—Product Substitution Procedures
- D. Section 01 65 00—Product Delivery
- E. Section 01 66 00—Product Storage and Handling Requirements
- F. Section 01 71 00—Examination and Preparation
- G. Section 01 73 00—Execution
- H. Section 01 74 00—Cleaning and Waste Management
- I. Section 01 75 00—Starting and Adjusting
- J. Section 01 76 00—Protecting Installed Construction
- K. Section 06 22 00—Millwork: Wood trim other than furnished by door and frame manufacturer
- L. Section 07 92 00—Joint Sealants: Sill sealant and perimeter caulking
- M. Section 08 71 00—Door Hardware: Hardware other than furnished by door and frame manufacturer
- N. Section 09 90 00—Paints and Coatings: Paint or stain other than factory applied finish

1.3 REFERENCES

- A. WDMA I.S.4: Industry Standard for Water Repellent Preservative Treatment for Millwork.
- B. Sealed Insulating Glass Manufacturers Association / Insulating Glass Certification Council (SIGMA / IGCC).
- C. American Architectural Manufacturers Association (AAMA): 2605: Voluntary Specification for High Performance Organic Coatings on Architectural Extrusions and Panels.
- D. National Fenestration Rating Council (NFRC): 101: Procedure for Determining Fenestration Product Thermal Properties.

1.4 SUBMITTALS

- A. Shop Drawings: Submit shop drawings under provisions of Section 01 33 23.
- B. Product Data: Submit catalog data under provisions of Section 01 33 23.
- C. Samples:
 - 1. Submit corner section under provisions of Section 01 33 23.
 - 2. Include glazing system, quality of construction, and specified finish.
- D. Quality Control Submittals: Certificates: Submit manufacturers certifications indicating compliance with specified performance and design requirements under provisions of Section 01 33 23.

1.5 DELIVERY

- A. Comply with provisions of Section 01 65 00.
- B. Deliver in original packaging and protect from weather.

1.6 QUALITY ASSURANCE

- A. Regulatory Requirements: Emergency Egress or Rescue: Comply with requirements for sleeping units of 2009 North Carolina Building Code.

1.7 STORAGE AND HANDLING

- A. Prime or seal wood surfaces, including surface to be concealed by wall construction, if more than thirty (30) days will expire between delivery and installation.
- B. Store door panels flat on a level surface in a clean and dry storage area under provisions of Section 01 66 00. Seal unfinished top and bottom edges of door panels if door panels are stored at the job site more than one (1) week.
- C. Condition doors to local average humidity before hanging.

1.8 WARRANTY

- A. Doors shall be warranted to be free from defects in manufacturing, materials, and workmanship for a period of ten (10) years from purchase date.
- B. Insulating glass shall be warranted against visible obstruction through the glass caused by a failure of the insulating glass air seal for a period of twenty (20) years from the date of original purchase.
- C. Please see separate manufacturer warranties for Commercial Door hardware components, sills and steel frames.

PART 2 PRODUCTS

2.1 MANUFACTURED UNITS

- A. Description: Factory assembled aluminum clad Commercial Door, as manufactured by Marvin Windows and Doors, Ripley, Tennessee.

2.2 FRAME DESCRIPTION

- A. Finger jointed, edge-glued pine core with clear pine veneer; finger jointed Douglas fir core with clear Douglas fir veneer; finger jointed, edge-glued white oak core with clear white oak veneer; finger jointed, edge-glued cherry core with clear cherry veneer; finger jointed, edge-glued mahogany core with clear mahogany veneer; finger jointed, edge-glued vertical grain Douglas fir core with clear vertical grain Douglas fir veneer.
 - 1. Kiln dried to a moisture content no greater than twelve (12) percent at the time of fabrication.
 - 2. Water repellent, preservative treated in accordance with WDMA I.S.4.
- B. Frame width: 6-9/16 inches (167 mm) with jamb extensions for a 2x8 wall.
- C. Frame thickness: 1-1/16 inches (27 mm).
- D. Exterior extruded aluminum clad 0.050 inch (1.3 mm) thick.
- E. Low profile ADA compliant sill. Jambs extended for a 2x8 wall.

PANEL DESCRIPTION

- A. Stiles: finger jointed, edge-glued LVL. Rails: finger jointed, edge-glued pine. Cherry veneer.
 - 1. Kiln dried to a moisture content no greater than twelve (12) percent at time of fabrication.
 - 2. Water repellent, preservative treated in accordance with WDMA I.S.4.
- B. Stiles contain laminated veneer lumber (LVL) core, solid wood top and bottom rail, with clear pine. Maple veneer.
- C. Composite panel thickness: 2 ¼ inches (57mm).
- D. Exterior extruded aluminum clad 0.055 inch (1.4 mm) thick.

- E. Top rail width: 2 ¼ inch panel 8 1/8 inches (206 mm).
- F. Stile width: 6 inches (152 mm).
- G. Bottom rail height: 11-3/8 inches (289 mm).
- H. Panel corners glued and fastened with 5/8 X 4 inch (16 mm X 102 mm) fluted hardwood dowels. Removable interior vinyl glazing stops with clear wood covers; 2 ¼ inch panel – nailed on glazing stops.

2.4 GLAZING

- A. Select quality complying with ASTM C 1036. Comply with 16 CFR 1201 Safety Standard for Architectural Glazing Materials. Tempered insulating glass IGMA/IGCC certified to performance level CBA when tested in accordance with ASTM E 774.
- B. Glazing Method: Tempered Insulating Glass (Altitude Adjusted).
- C. Glass Type: Clear; Low E II—Argon Gas; Laminated glass complying with Impact Zone 3
- D. Glazing Seal: Silicone bedding, exterior.

2.5 FINISH

- A. Exterior: Aluminum clad. Fluoropolymer modified acrylic topcoat applied over primer. Meets or exceeds AAMA 2605 requirements.
 - 1. Standard Color: Stone White
- B. Interior: Treated bare wood

2.6 HARDWARE

- A. Hinges: 4 ½" X 4 ½" square corner ball bearing hinges. Finish: Stainless Steel.
- C. Locking System: Von Duprin 98 L, Von Duprin 98 EO
- D. Closers: LCN 1461, parallel arm attaches to push side of door (includes Extra Duty Arm and Self Reaming and Tapping Screws) Finish: Aluminum (BHMA 689)

2.7 WEATHER STRIP

- A. Head jamb and side jambs to have two sets of bulb weather strip, locking stiles have pile weather strip maintaining contact with door panels.

2.8 JAMB EXTENSION

- A. Factory loose, for 2x8 wall thickness.
- B. Finish: Match interior frame wood species and finish.

2.9 ACCESSORIES AND TRIM

- A. Installation and Hardware Accessories:
 - 1. Factory installed vinyl nailing fin/drip cap.
 - 2. Installation brackets: 9-3/8 inches (238 mm).

PART 3 EXECUTION

3.1 EXAMINATION

- A. Verification of Conditions: Before Installation, verify openings are plumb, square, and of proper dimension as required in Section 01 71 00.
- B. Acceptance of Conditions: Beginning of installation confirms acceptance of existing conditions.

3.2 INSTALLATION

- A. Comply with Section 01 73 00.
- B. Assemble and install doors and frames according to manufacturer's instructions and reviewed shop drawings.
- C. Install frames and stationary panels as required.
- D. Install accessory items as required.
- E. Use finish nails to apply wood trim and mouldings.

3.3 STARTING AND ADJUSTING

- A. Adjust door to work freely with hardware functioning properly.

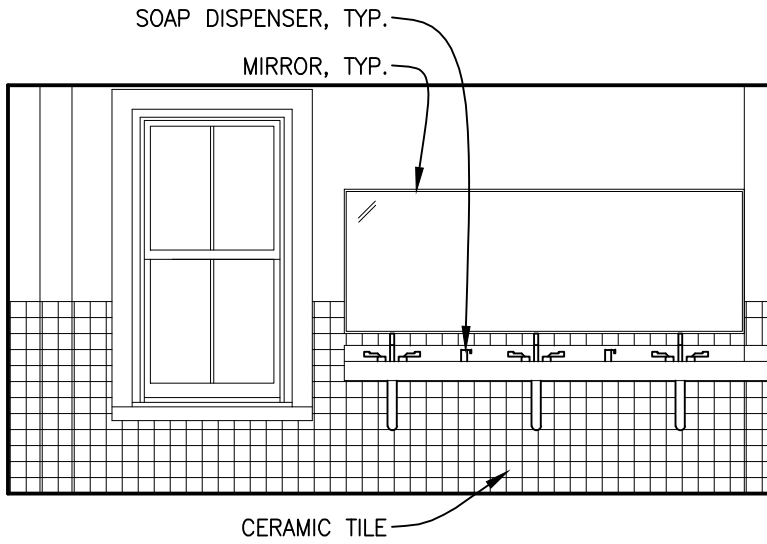
3.4 CLEANING

- A. Remove visible labels and adhesive residue according to manufacture's instructions.
- B. Leave doors and glass in a clean condition. Final cleaning as required in Section 01 74 00.

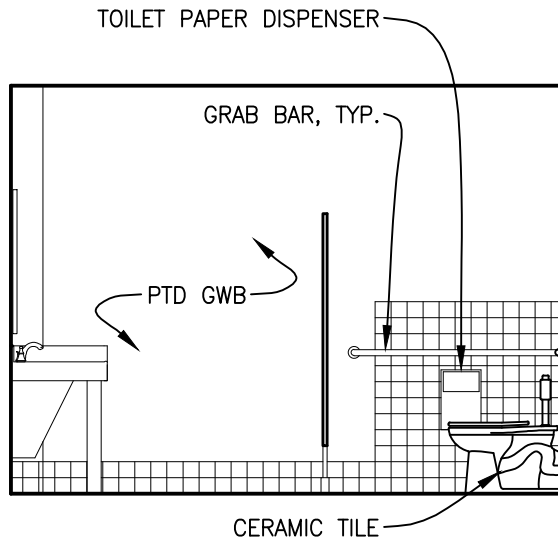
3.5 PROTECTING INSTALLED CONSTRUCTION

- A. Comply with Section 01 76 00.
- B. Cover doors and frames during painting or other construction operations that may cause damage.

END OF SECTION

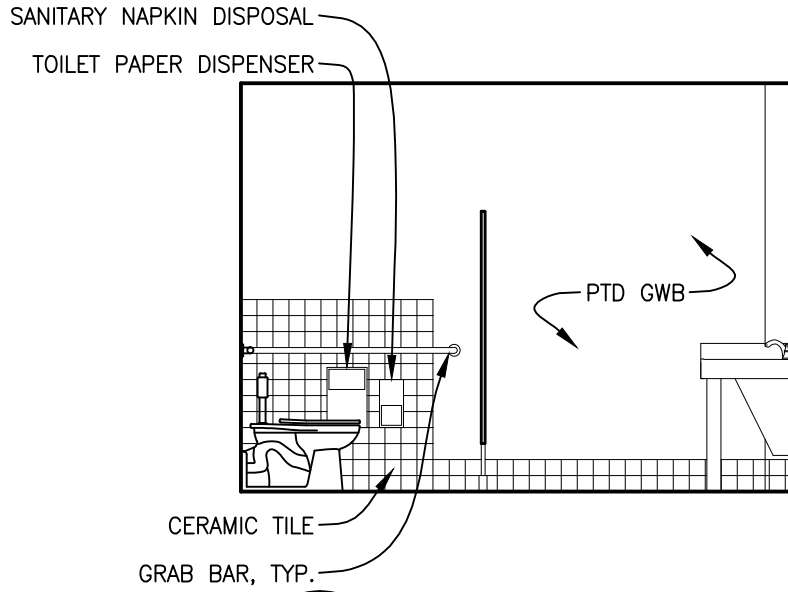


4 MEN 209
A7.2 SCALE: 1/4" = 1'-0"

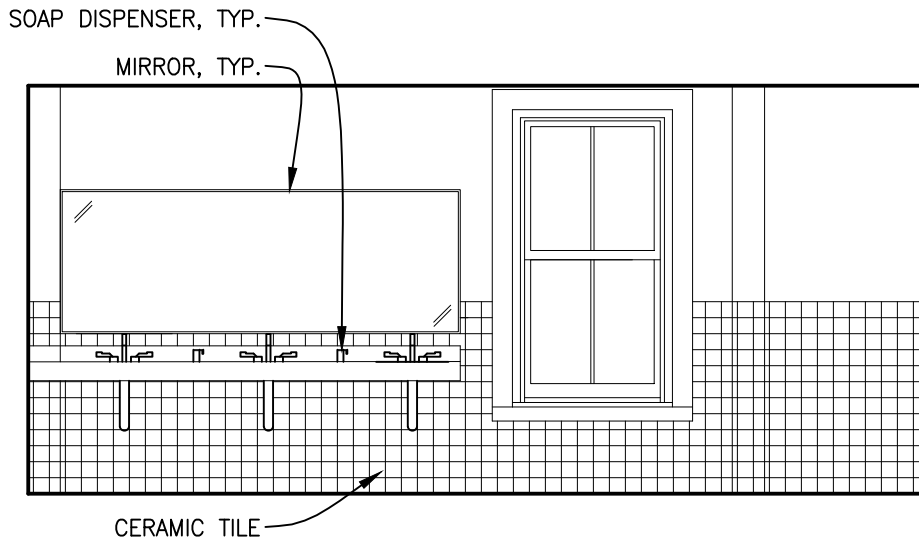


5 MEN 209
A7.2 SCALE: 1/4" = 1'-0"



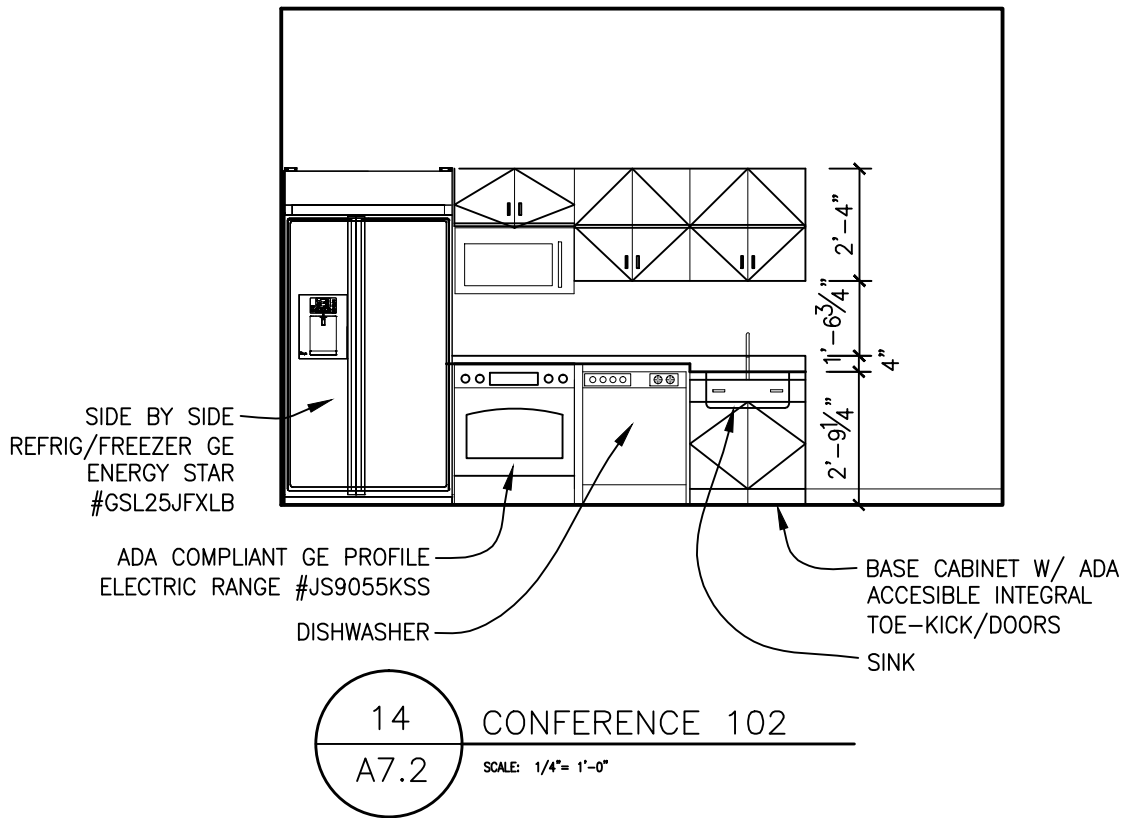


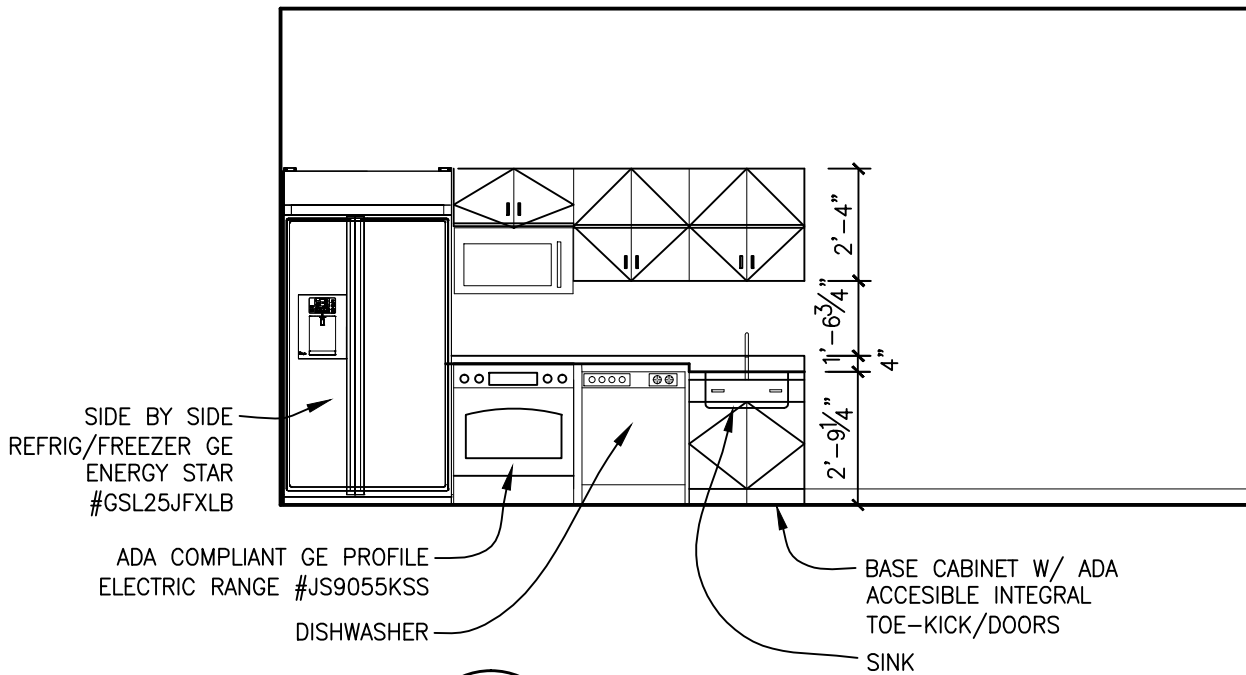
8 WOMEN 208
A7.2 SCALE: 1/4" = 1'-0"



9 WOMEN 208
A7.2 SCALE: 1/4" = 1'-0"







15 BREAKROOM 204
A7.2 SCALE: 1/4" = 1'-0"

