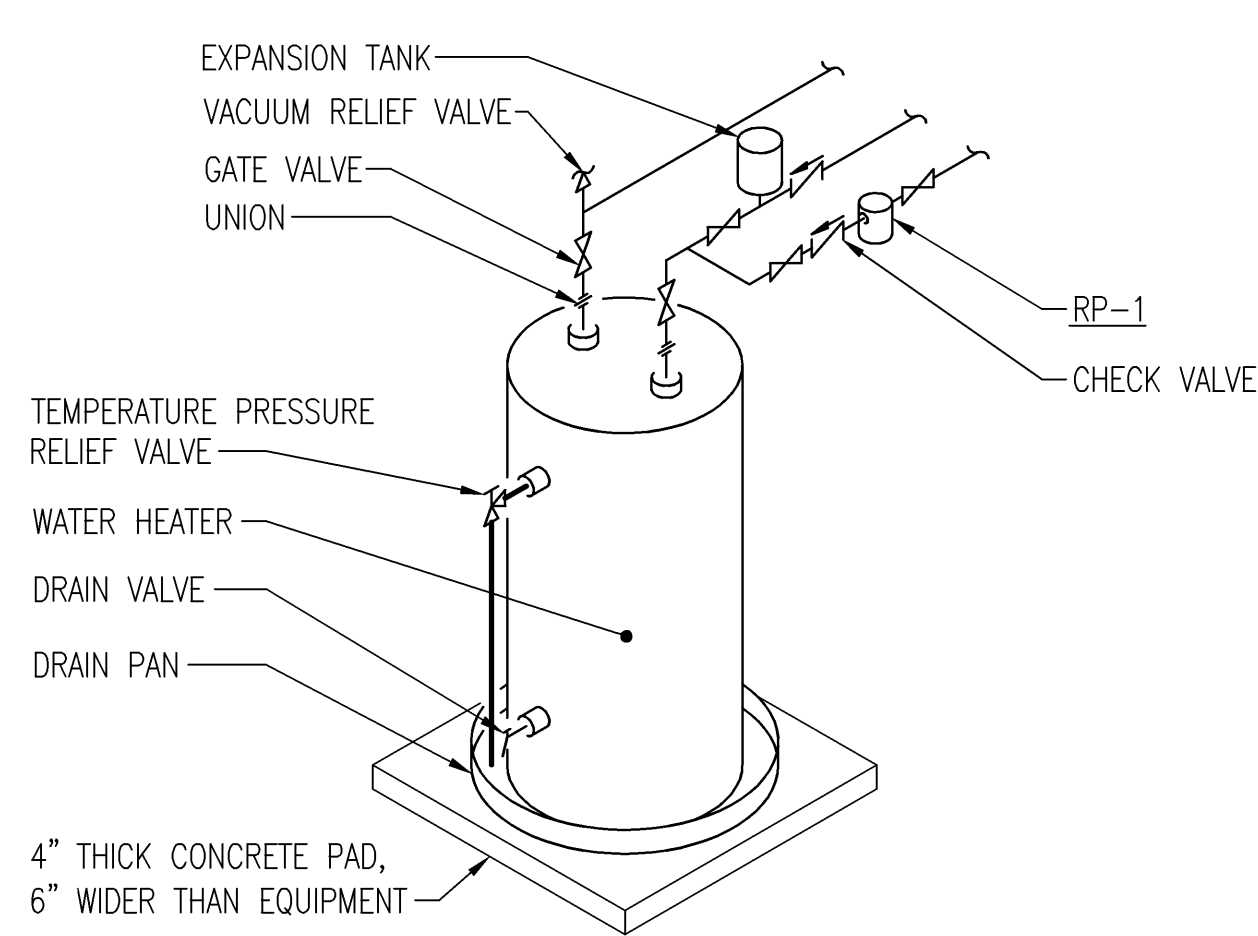


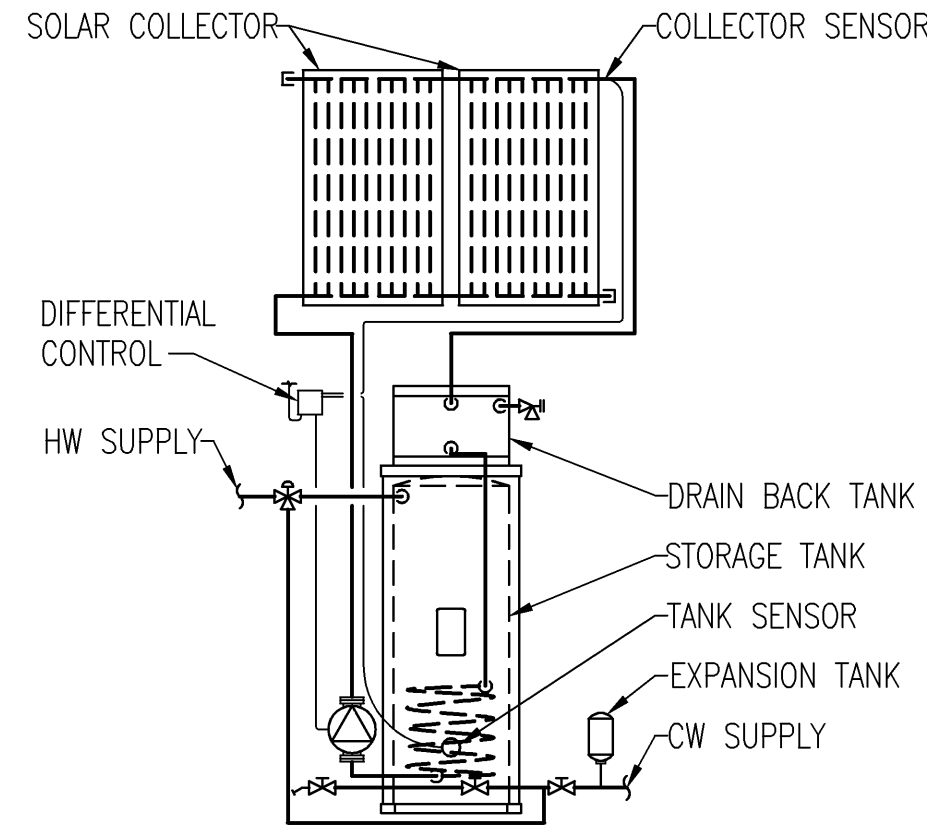
PIPING SYSTEM	SYSTEM TEMPERATURE RANGE (°F)	PIPING INSULATION THICKNESS		
		1" & LESS	1-1/4"-2"	2-1/2" & MORE
DOMESTIC HW & HWR	110 - 140	1"	1"	1-1/2"
DOMESTIC CW	48 - 80	1/2"	3/4"	1"
INTERIOR A.C. CONDENSATE & WATER COOLER DRAIN	ALL	1/2"	3/4"	-
FLOOR DRAINS	ALL	-	1/2"	1/2"

NOTE: PROVIDE CORRUGATED OR SMOOTH ALUMINUM JACKET FOR ALL INSULATED PIPES 0'-0" TO 6'-0" ABOVE FINISHED FLOORS & MEZZANINES FOR INSULATION PROTECTION. ALL SERVICE JACKET SHALL BE WHITE KRAFT BONDED TO 0.025mm (1 MIL) THICK ALUMINUM FOIL, FIBERGLASS REINFORCED, WITH PRESSURE SENSITIVE ADHESIVE CLOSURE. COMPLY WITH ASTM C1136. PROVIDE PREFORMED MOISTURE BARRIER JACKETS OVER FITTINGS AND VALVES.



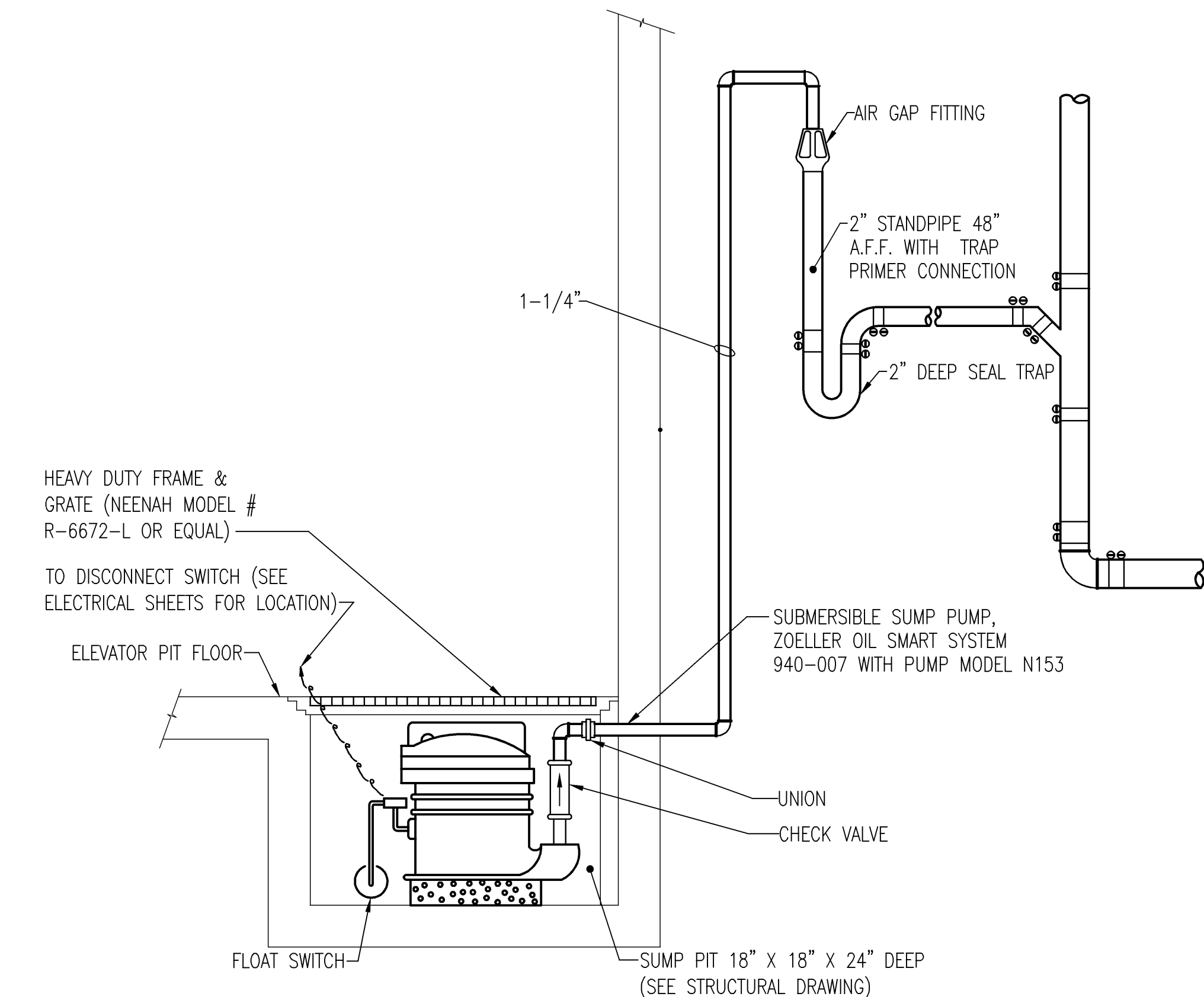
WATER HEATER DETAIL - (WH-1A)

NO SCALE



ALTERNATE BID SOLAR WATER HEATER DETAIL - (WH-1B)

NO SCALE



SUMP PUMP DETAIL (SP-1)

NO SCALE

GENERAL NOTES

ALL PLUMBING VENTS IN EXTERIOR WALLS SHALL BE OFFSET A MINIMUM OF 3'-0" AT ROOF BEFORE ROOF PENETRATION.

ALL PLUMBING VENTS WITHIN A 10'-0" RADIUS OF EXHAUST VENTS SHALL BE EXTENDED TO A HEIGHT OF 2'-0" ABOVE EXHAUST VENT CROWN.

ALL PLUMBING VENTS WITHIN A 10'-0" RADIUS OF ANY ROOF TOP UNIT SHALL BE EXTENDED TO A HEIGHT OF 3'-0" ABOVE THE FRESH AIR INTAKE.

ALL PLUMBING & PLUMBING MATERIALS SHALL MEET THE REQUIREMENTS OF THE STATE & LOCAL PLUMBING CODES.

ALL WALL HYDRANTS SHALL BE MOUNTED 24" ABOVE FINISHED GRADE UNLESS OTHERWISE SPECIFIED.

SLOPES & INVERT ELEVATIONS OF ALL INTERIOR PIPING SHALL BE ESTABLISHED BEFORE ANY PIPING IS INSTALLED, IN ORDER THAT PROPER SLOPES WILL BE MAINTAINED. ALL PIPING SHALL BE RUN TO AVOID CONFLICTS WITH OTHER TRADES.

COORDINATE WITH ARCHITECTURAL WORKING DRAWINGS BEFORE ROUGHING-IN PLUMBING FIXTURES.

MAKE PROPER HOT & COLD WATER, HOT WATER RECIRCULATING, WASTE, VENT, & GAS, ETC., PIPING CONNECTIONS TO ALL FIXTURES & EQUIPMENT EVEN THOUGH ALL BRANCHES, FITTINGS & CONNECTIONS ARE NOT SHOWN.

COORDINATE LOCATION OF ALL EQUIPMENT, FIXTURES & PIPING WITH STRUCTURAL & ALL OTHER TRADES. PIPING RUN AC SHALL BE RUN AS HIGH AS POSSIBLE.

ALL OPENINGS IN CEILINGS & PLENUM WALLS FOR PLUMBING PIPES SHALL BE SEALED AIR TIGHT.

SEE SITE PLAN FOR EXTENT OF ALL PIPING LEAVING & ENTERING BUILDING.

ALL HOT & COLD WATER PIPING INDICATED TO RUN ABOVE FINISHED CEILINGS OR IN EXTERIOR WALLS SHALL BE INSTALLED ON THE CONDITIONED SPACE SIDE OF THE BUILDING INSULATION.

SLOPES & INVERT ELEVATIONS OF EXTERIOR SEWERS, MANHOLES, ETC., SHALL BE ESTABLISHED & VERIFIED BY PLUMBING CONTRACTOR BEFORE ANY PIPING IS INSTALLED IN ORDER THAT PROPER SLOPES WILL BE MAINTAINED & NECESSARY INVERT ELEVATIONS OBTAINED.

PROVIDE AUTOMATIC TRAP PRIMERS FOR ALL FLOOR DRAINS. TRAP PRIMERS SHALL BE INSTALLED IN AN ACCESSIBLE LOCATION FOR MAINTENANCE.

IT IS THE INTENTION OF THESE DRAWINGS TO COVER ALL WORK & MATERIAL FOR A COMPLETE FIRST CLASS INSTALLATION. ANY EQUIPMENT, PLUMBING FIXTURE, TRIM HARDWARE &/OR DEVICES USUALLY UTILIZED IN THE CLASS OF WORK, THOUGH NOT SPECIFICALLY MENTIONED OR SHOWN ON THE DRAWINGS, BUT WHICH MAY BE NECESSARY FOR THE SATISFACTORY COMPLETION OF THE WORK (AS DETERMINED BY THE ARCHITECT) SHALL BE FURNISHED & INSTALLED BY THE CONTRACTOR AS PART OF HIS TOTAL WORK.

VERIFY ALL EXISTING CONDITIONS PRIOR TO BEGINNING WORK OR ORDERING EQUIPMENT, PIPING, FIXTURES, ETC.

SEAL AROUND ALL WALL PENETRATIONS AIR TIGHT AT MECHANICAL ROOM, & FILL ANY VOIDS WITH MORTAR.

INSTALL ALL EQUIPMENT IN ACCORDANCE WITH MANUFACTURER'S RECOMMENDATIONS & ALL APPLICABLE LISTING REQUIREMENTS.

LEGEND & ABBREVIATIONS

---	DOMESTIC COLD WATER (CW)	AC	ABOVE CEILING
---	DOMESTIC HOT WATER (HW)	ADA	AMERICANS WITH DISABILITIES ACT COMPLIANT
---	DOMESTIC HOT WATER RETURN (HWR)	AFF	ABOVE FINISHED FLOOR
---	SANITARY WASTE PIPE (WP)	AFG	ABOVE FINISHED GRADE
---	SANITARY VENT PIPE (VP)	BF	BELOW FLOOR
---	PIPE SLEEVE	BFF	BELOW FINISH FLOOR
○	PIPE TURN UP	BTU	BRITISH THERMAL UNIT
○	PIPE TURN DOWN (DN)	CT	COUNTER TOP
+	WALL HYDRANT (WH)	DFU	DRAINAGE FIXTURE UNIT
+	CLEAN OUT (CO)	ELEC	ELECTRIC
+	WALL CLEAN OUT (WCO)	ELEV	ELEVATION
+	REDUCED PRESSURE ZONE BACKFLOW PREVENTER (RPZ)	F	FAHRENHEIT
+	BALANCING VALVE (BV)	GAL	GALLON
+	BALL VALVE (BV)	GPH	GALLONS PER HOUR
+	CHECK VALVE (CV)	GPM	GALLONS PER MINUTE
+	STRAINER	HP	HORSE POWER
+	FLOOR CLEAN OUT (FCO)	HR	HOUR
+	FLOOR DRAIN (FD)	INV	INVERT
+	VENT THROUGH ROOF (VTR)	KW	KILOWATTS
+	NEW WORK NOTE DESIGNATION	LAV	LAVATORY
○	DETAIL/RISER/ENLARGED PLAN SHEET WHERE CUT/SHOWN	MAX	MAXIMUM
○		MIN	MINIMUM
○		NIC	NOT IN CONTRACT
○		OFCI	OWNER FURNISHED, CONTRACTOR INSTALLED
○		OFOI	OWNER FURNISHED, OWNER INSTALLED
○		OHD	OPEN HUB DRAIN
○		P-#	PLUMBING FIXTURE MARK
○		PSI	PRESSURE PER SQUARE INCH
○		PSIG	POUNDS PER SQUARE INCH GAUGE
○		PW	PUMPED WASTE
○		RPBP	REDUCED PRESSURE BACKFLOW PREVENTER
○		SD	STORM DRAIN
○		SFU	SUPPLY FIXTURE UNIT
○		SP	SUMP PUMP
○		SQ	SQUARE
○		TEMP	TEMPERATURE
○		TP	AUTOMATIC TRAP PRIMER
○		TYP	TYPICAL
○		VS	VENT STACK
○		W/	WITH
○		WH	WALL HYDRANT
○		WH-#	WATER HEATER MARK
○		WS	WASTE STACK
○		*F	DEGREE FAHRENHEIT

PUMP SCHEDULE

MARK	TYPE	MANUFACTURER	MODEL	LOCATION	VOLTAGE	HP	PHASE	GPM	HEAD	REMARKS
SP-1	SUMP PUMP	ZOELLER	N153	ELEVATOR PITS	115	1/3	1	20	15 FT	SMART PUMP
RP-1	RECIRCULATOR PUMP	BELL & GOSSETT	PD35S	MECHANICAL ROOM	115	1/4	1	10	20'	DOMESTIC HOT WATER RECIRCULATION

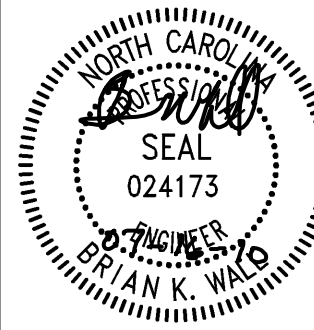
ELECTRIC WATER HEATER SCHEDULE

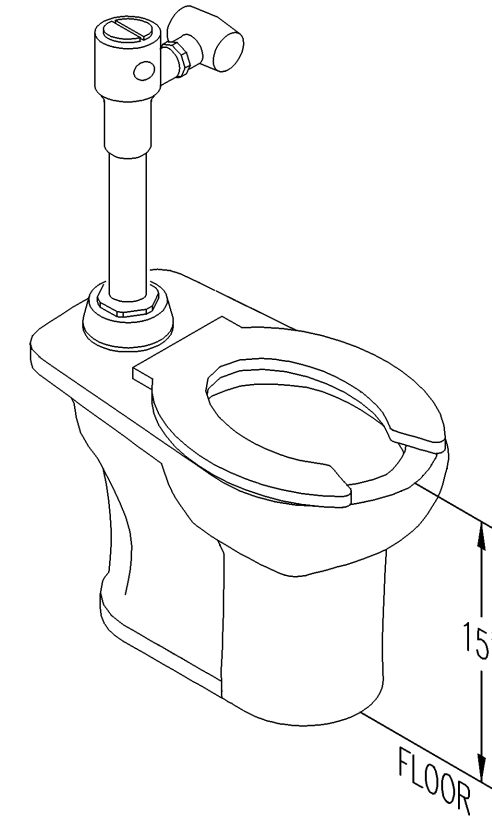
MARK	TYPE	LOCATION	STORAGE CAPACITY	ELECTRICAL			EXPANSION TANK		MOUNTING	REMARKS
				KILOWATTS	VOLTS	PHASE	ACCEPTANCE	TOTAL		
WH-1A	STORAGE	MECHANICAL ROOM	65	4.5	240	1	0.62	1.47	FLOOR	INSTALL PER MANUFACTURER'S RECOMMENDATION

ALTERNATE BID SOLAR WATER HEATER SCHEDULE

MARK	TYPE	LOCATION	STORAGE CAPACITY	ELECTRICAL			EXPANSION TANK		MOUNTING	REMARKS
				KILOWATTS	VOLTS	PHASE	ACCEPTANCE	TOTAL		
WH-1B	STORAGE	MECHANICAL ROOM	80	4.5	240	1	0.76	1.81	FLOOR	316L STAINLESS STEEL EAGLE SUN SYSTEM DBS SERIES OR EQUIVALENT BY SOLAR SKIES WITH COLLECTOR, STORAGE TANK & DRAIN BACK RESERVOIR SINGLE WALL HEAT EXCHANGER & PUMP. INSTALL PER MANUFACTURER'S RECOMMENDATION.

① COORDINATE COMPLETE INSTALLATION INCLUDING POWER REQUIREMENTS, SENSORS, CONTROLS, PIPING, ARRANGEMENTS, ETC WITH MANUFACTURER'S INSTRUCTIONS.





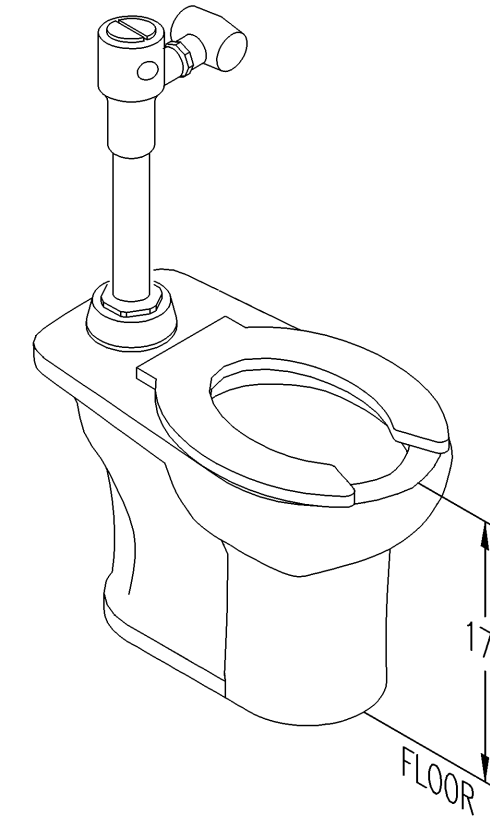
SPECIFICATIONS:

- VITREOUS CHINA ADA COMPLIANT FLOOR MOUNTED FLUSH VALVE WATER CLOSET WITH FULLY GLAZED 2" TRAPWAY, ELONGATED SIPHON JET BOWL, 1.1/1.6 GALLONS PER FLUSH. FLUSH HANDLE LOCATED ON WIDE SIDE OF STALL.
- WHITE SOLID PLASTIC OPEN FRONT ELONGATED SEAT WITH EXTERNAL CHECK HINGES, INTEGRAL BUMPERS, LESS COVER.

DETAIL BASED ON AMERICAN STANDARD, "MADERA" SERIES

MARK	DESCRIPTION	TRAP	PIPE SIZES				MOUNTING
			HW	CW	WP	VP	
P-1	ADA - DUAL FLUSH VALVE WATER CLOSET	INTEGRAL	-	1"	4"	2"	FLOOR

ADA - WATER CLOSET



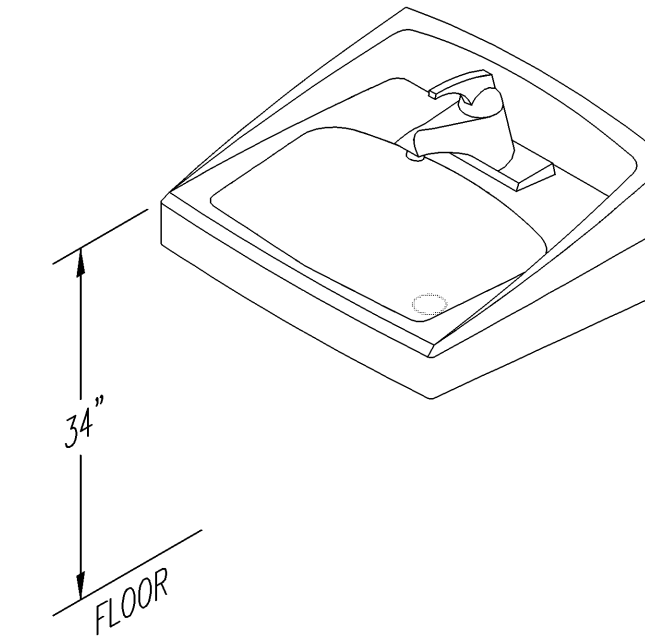
SPECIFICATIONS:

- VITREOUS CHINA ADA COMPLIANT FLOOR MOUNTED FLUSH VALVE WATER CLOSET WITH FULLY GLAZED 2" TRAPWAY, ELONGATED SIPHON JET BOWL, 1.1/1.6 GALLONS PER FLUSH. FLUSH HANDLE LOCATED ON WIDE SIDE OF STALL.
- WHITE SOLID PLASTIC OPEN FRONT ELONGATED SEAT WITH EXTERNAL CHECK HINGES, INTEGRAL BUMPERS, LESS COVER.

DETAIL BASED ON AMERICAN STANDARD, "MADERA" SERIES

MARK	DESCRIPTION	TRAP	PIPE SIZES				MOUNTING
			HW	CW	WP	VP	
P-2	ADA - DUAL FLUSH VALVE WATER CLOSET	INTEGRAL	-	1"	4"	2"	FLOOR

WATER CLOSET



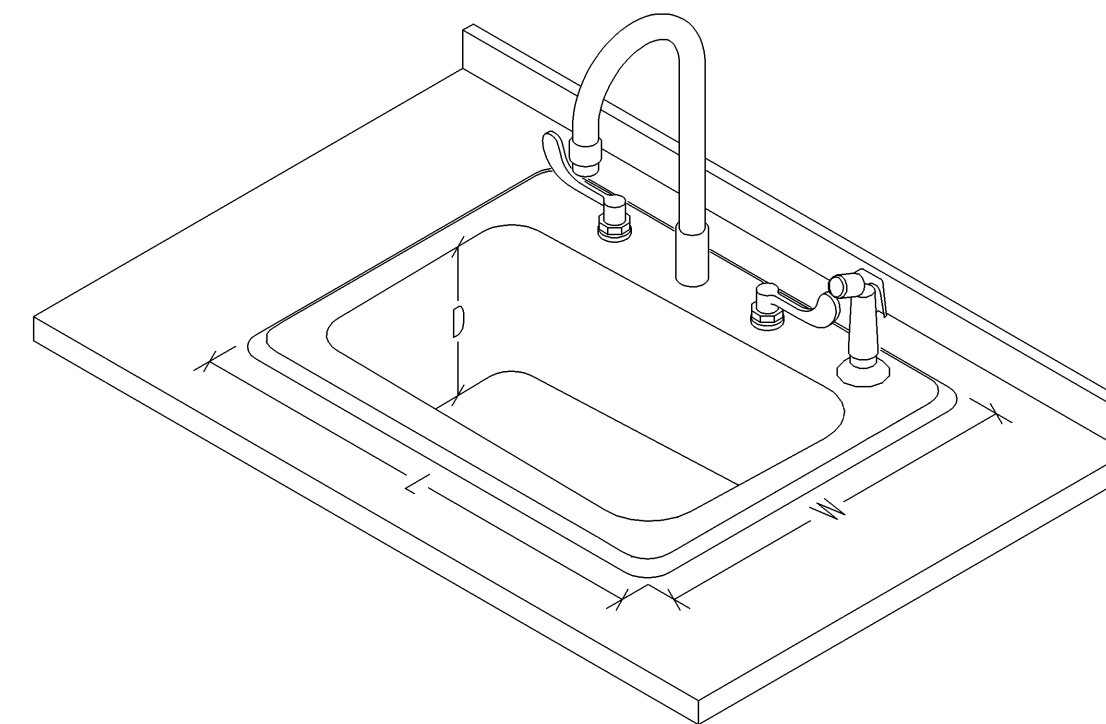
SPECIFICATIONS:

- VITREOUS CHINA ADA COMPLIANT WALL MOUNTED LAVATORY WITH FRONT OVERFLOW & FAUCET HOLES ON 4" CENTERS & SELF DRAINING DECK.
- CHROME PLATED CAST BRASS SINGLE CONTROL CENTERSET FAUCET POLISH CHROME PLATED FINISH, CERAMIC VALVE, ADA COMPLIANT LEVER HANDLE WITH COLOR INDEX, 0.5 GPM VANDAL RESISTANT AERATING SPRAY OUTLET, LESS POP-UP. AS MANUFACTURED BY CAMBRIDGE BRASS.
- CHROME FINISH CAST BRASS LOOSE KEY ANGLE STOPS WITH CHROME FINISH RIGID SUPPLY RISERS. OFFSET GRID STRAINER AND ADJUSTABLE "P"-TRAP WITH ANSI AND ADA APPROVED, VINYL MOLDED INSULATION WITH NYLON FASTENER KITS, PAINTED AS DIRECTED BY THE ARCHITECT.
- CONCEALED FLOOR MOUNT SUPPORT. WALL BRACKETS SHALL NOT BE USED.

DETAIL BASED ON AMERICAN STANDARD, "LUCERNE" SERIES

MARK	DESCRIPTION	TRAP	PIPE SIZES				MOUNTING
			HW	CW	WP	VP	
P-3	ADA - WALL MOUNTED LAVATORY	"P"-TRAP	1/2"	1/2"	2"	1-1/2"	WALL MOUNTED

ADA - WALL MOUNTED LAVATORY



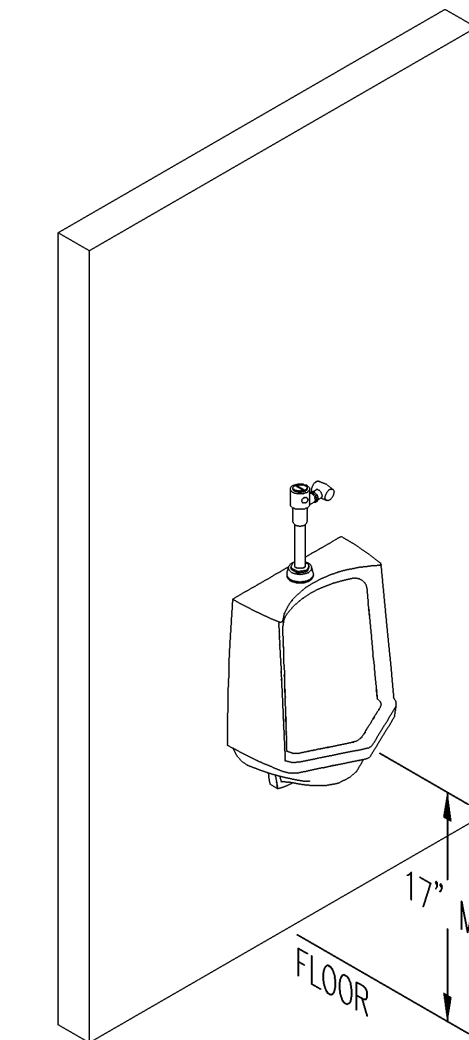
SPECIFICATIONS:

- SEAMLESS DIE DRAWN 18 GAUGE STAINLESS STEEL ADA COMPLIANT SINK WITH EXPOSED SURFACE POLISHED TO A NON-POROUS FINISH. FULLY COATED UNDERSIDE INSULATED FOR SOUND AND CONDENSATE.
- 8" CENTER, TWO HANDLE BELOW DECKMOUNT FAUCET, POLISHED CHROME PLATED FINISH TRIM, CAST BRASS BODIES, BRASS SPOUT AND TRIM, HEAVY DUTY RIGID/SWIVEL GOOSENECK SPOUT, STANDARD 2.2 GPM FLOW CONTROL AERATOR, 4" BLADE HANDLES, COLOR INDEX METAL HANDLES WITH VANDAL RESISTANT SCREWS AND WITH HOSE SPRAY, AS MANUFACTURED BY CAMBRIDGE BRASS.
- CHROME FINISH CAST BRASS LOOSE KEY ANGLE STOPS WITH CHROME FINISH RIGID SUPPLY RISERS. OFFSET GRID STRAINER AND ADJUSTABLE "P"-TRAP WITH ANSI AND ADA APPROVED, VINYL MOLDED INSULATION WITH NYLON FASTENER KITS, PAINTED AS DIRECTED BY THE ARCHITECT.

DETAIL BASED ON JUST, "STYLIST" GROUP

MARK	DESCRIPTION	TRAP	PIPE SIZES				MOUNTING
			HW	CW	WP	VP	
P-4	ADA - KITCHEN SINK 18"Wx15"Lx6-1/2"D	"P"-TRAP	1/2"	1/2"	2"	1-1/2"	COUNTER TOP

ADA - KITCHEN SINK COUNTER TOP



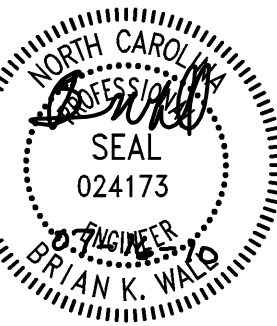
SPECIFICATIONS:

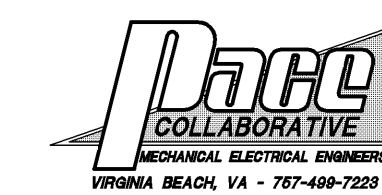
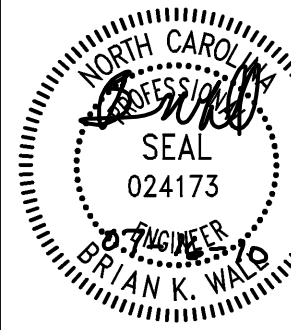
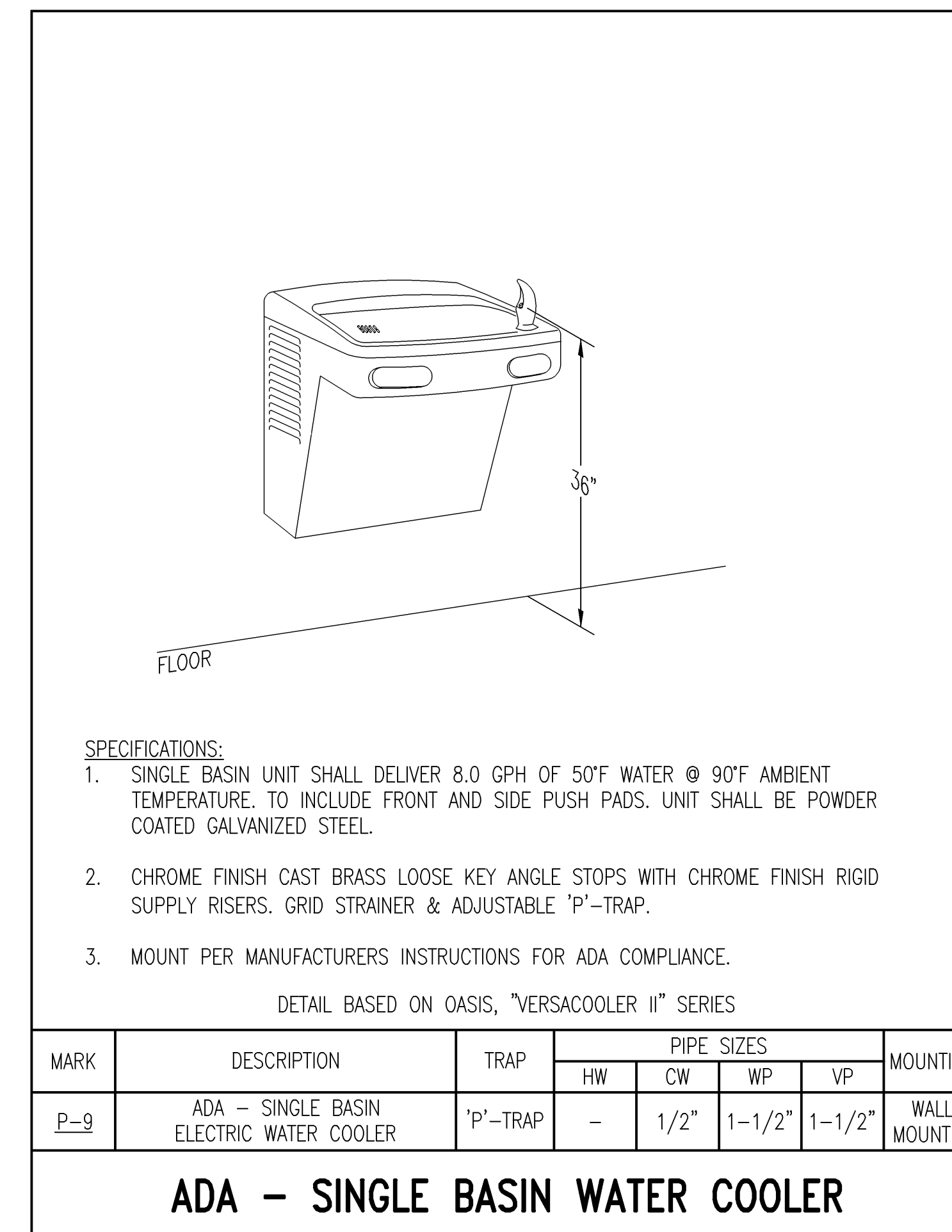
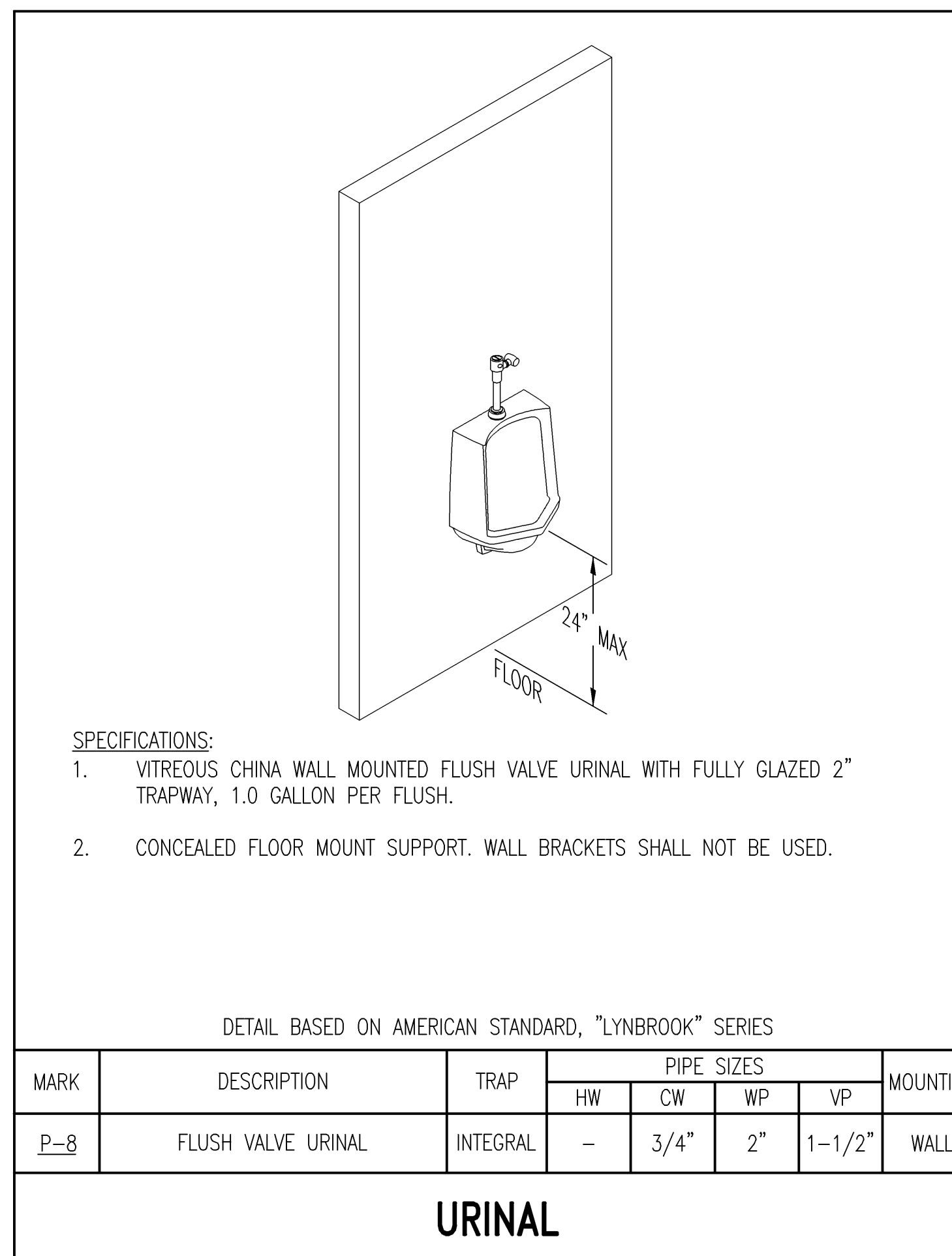
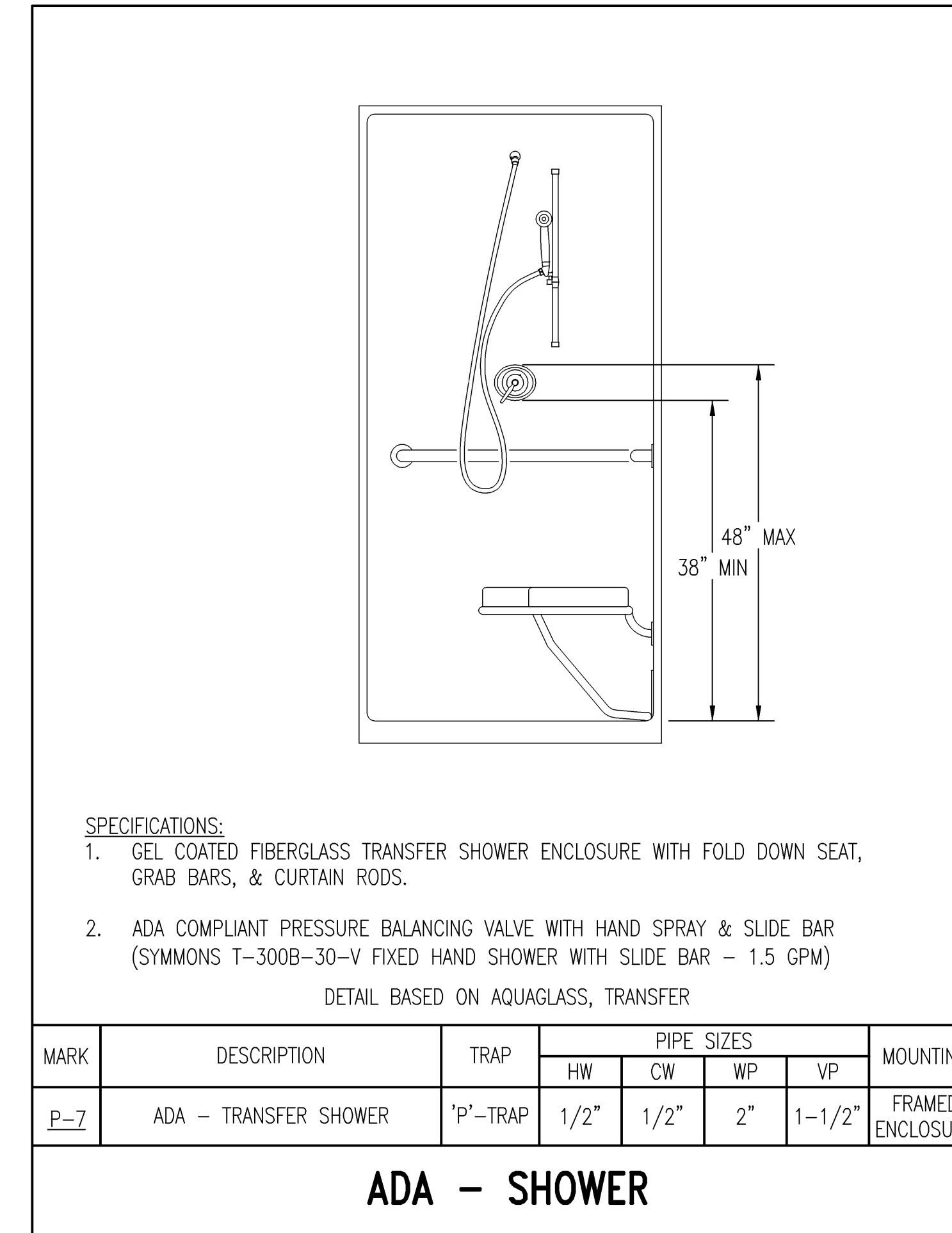
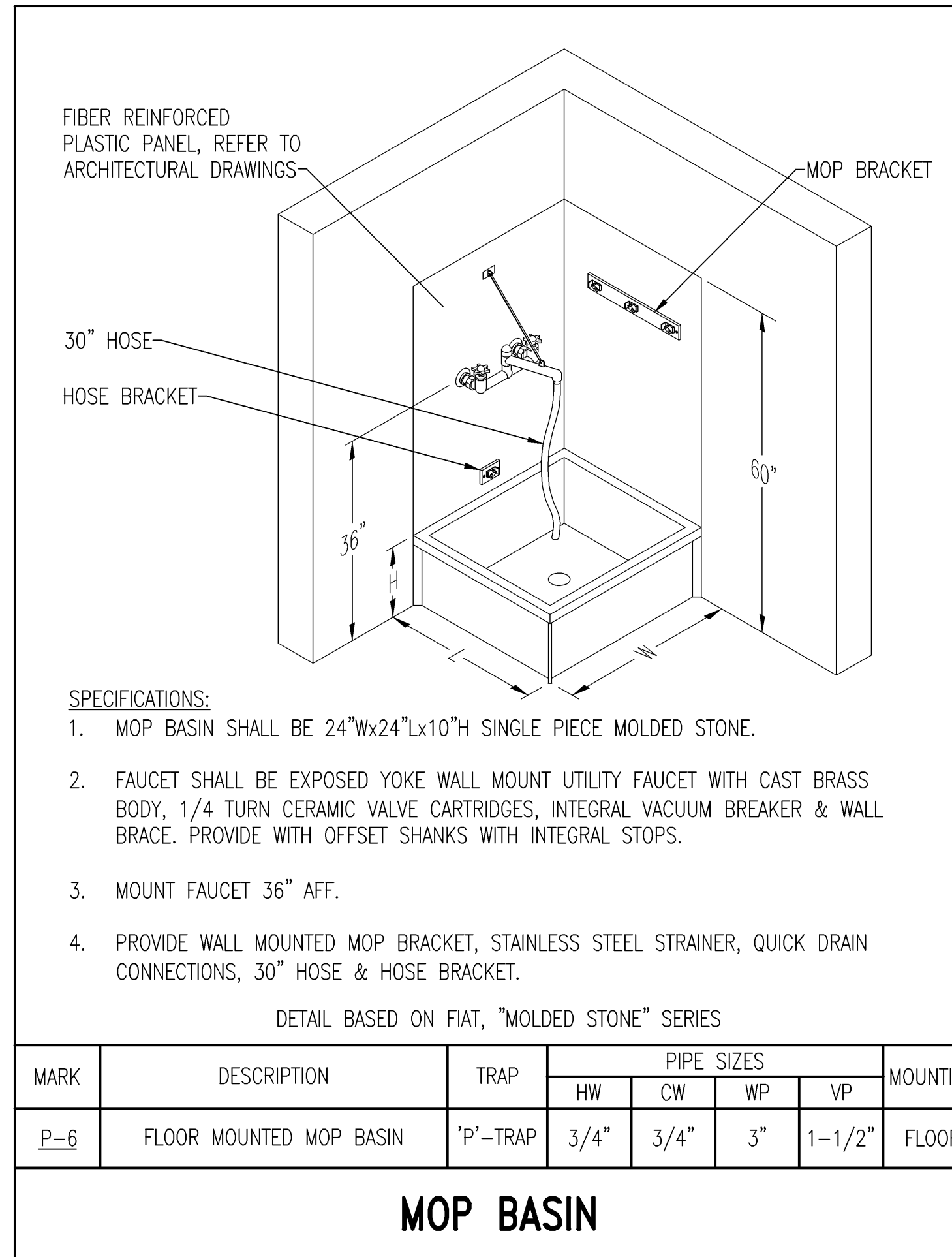
- VITREOUS CHINA ADA COMPLIANT WALL MOUNTED FLUSH VALVE URINAL WITH FULLY GLAZED 2" TRAPWAY, 1.0 GALLON PER FLUSH.
- CONCEALED FLOOR MOUNT SUPPORT. WALL BRACKETS SHALL NOT BE USED.

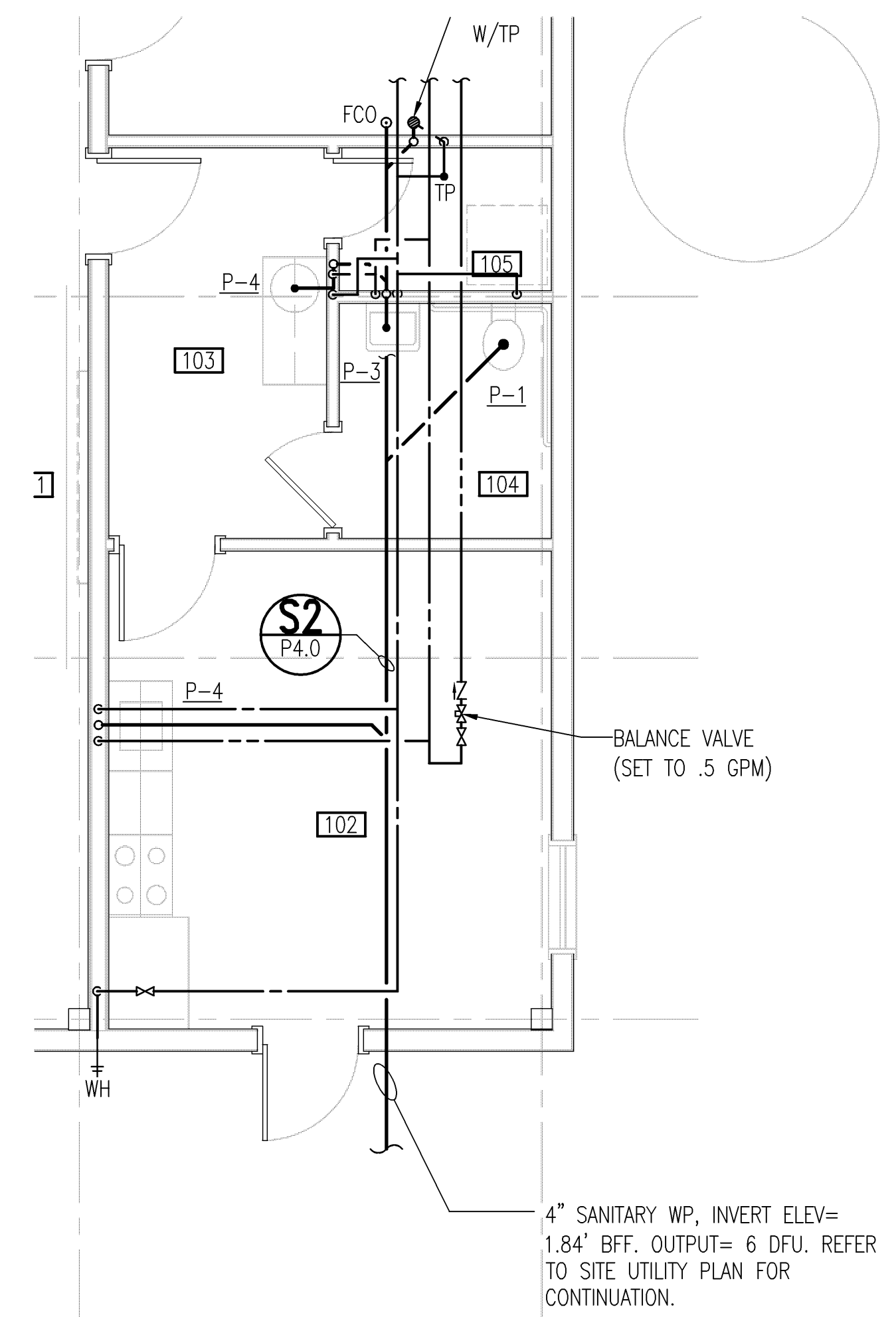
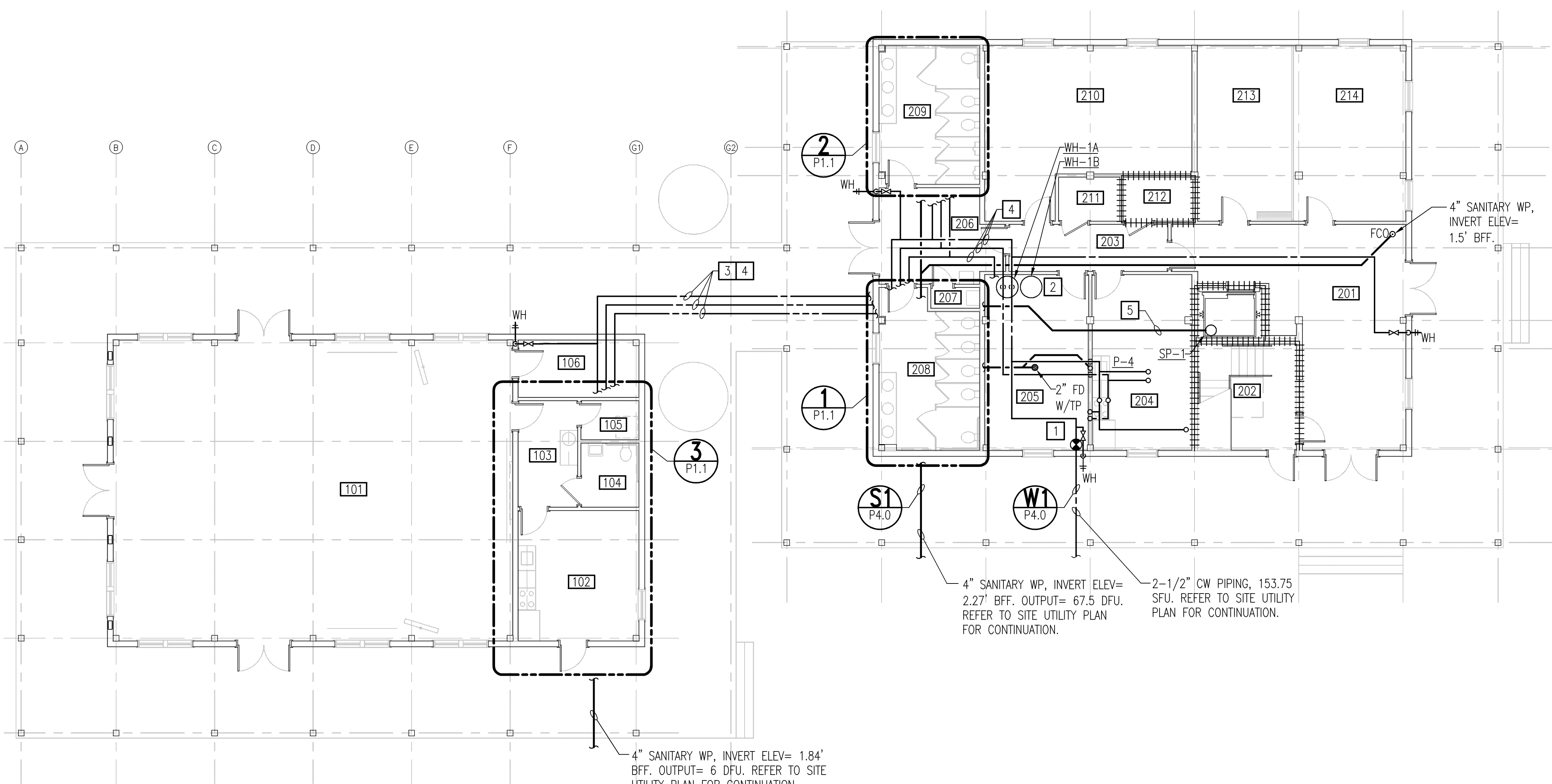
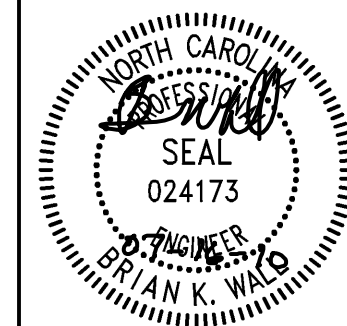
DETAIL BASED ON AMERICAN STANDARD, "LYNBROOK" SERIES

MARK	DESCRIPTION	TRAP	PIPE SIZES				MOUNTING
			HW	CW	WP	VP	
P-5	ADA - FLUSH VALVE URINAL	INTEGRAL	-	3/4"	2"	1-1/2"	WALL

ADA - URINAL





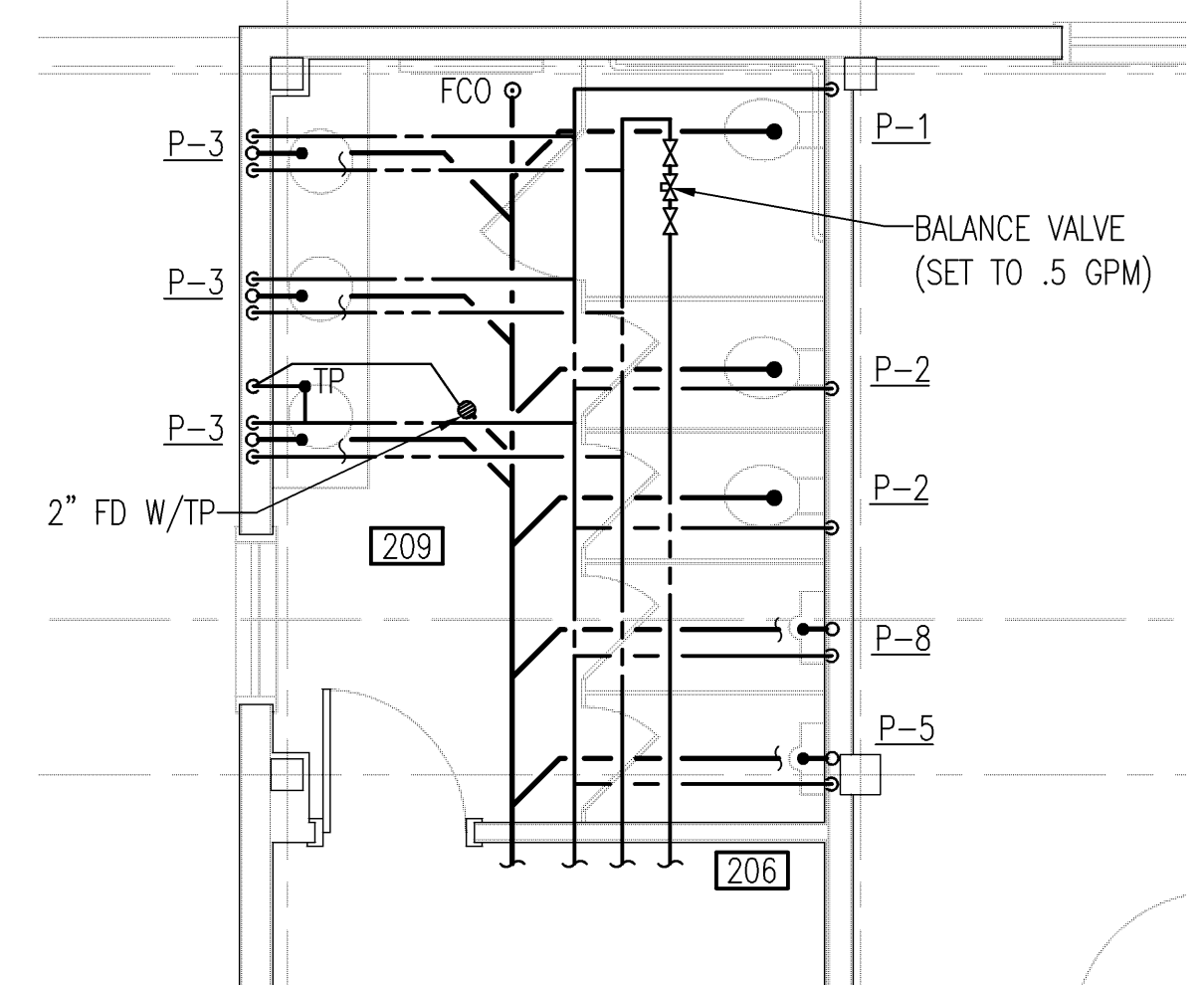
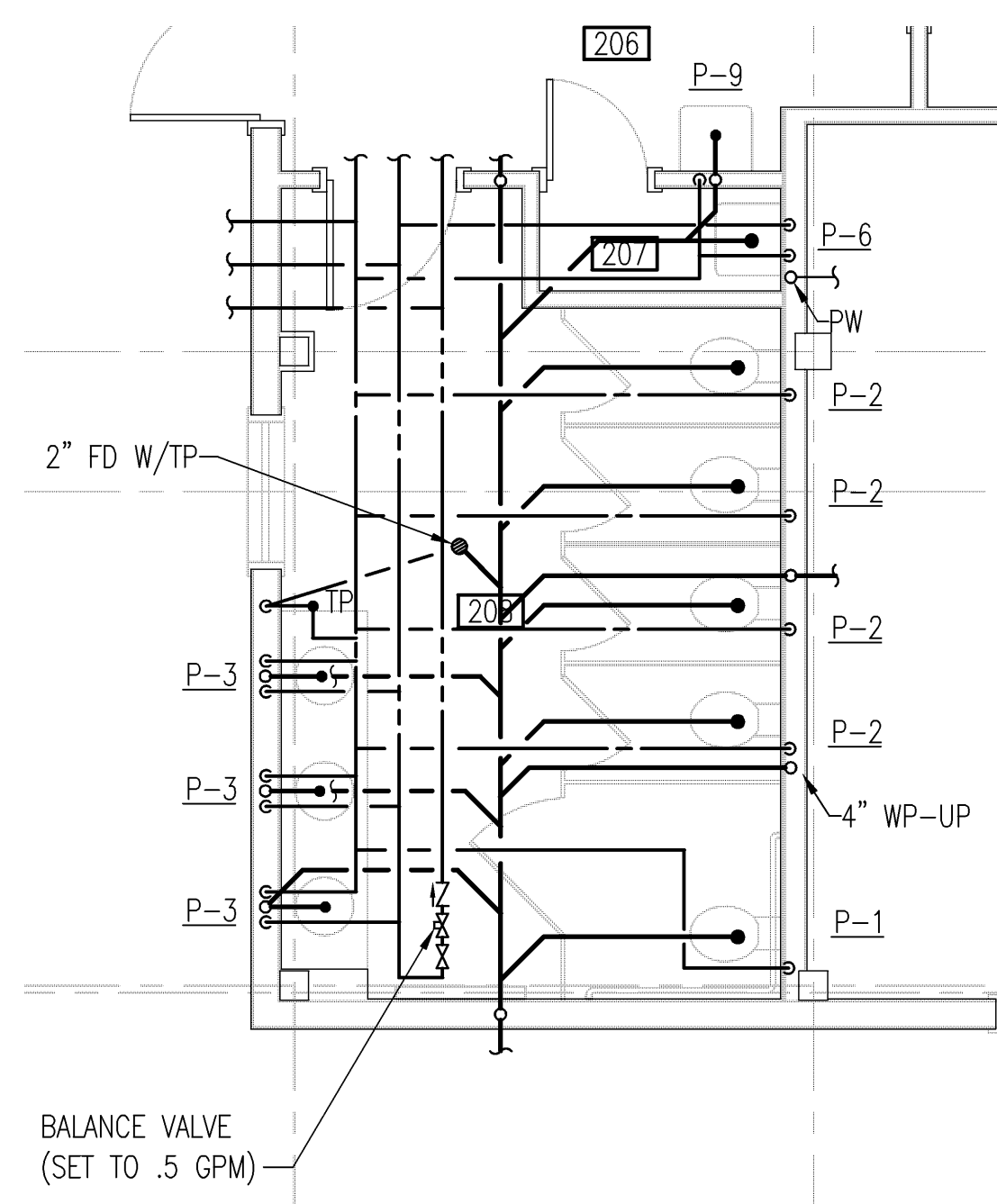


PLUMBING FIRST FLOOR PLAN
 SCALE: 1/8" = 1'-0"

ENLARGED PLUMBING PLAN
 SCALE: 1/4" = 1'-0"

NOTES THIS SHEET

- 1 PROVIDE REDUCED PRESSURE BACKFLOW PREVENTER IN VERTICAL POSITION ALONG WALL. ROUTE RELIEF DRAIN TO EXTERIOR OF BUILDING.
- 2 65 GALLON STORAGE TANK AND DRAIN BACK TANK FOR SOLAR WATER HEATING SYSTEM FOR ALTERNATE BID SOLAR WATER HEATER.
- 3 PROVIDE HEAT TRACE ON PIPING BETWEEN BUILDINGS. REFER TO ELECTRICAL DRAWINGS FOR REQUIREMENTS.
- 4 PROVIDE INSULATION, HANGERS, AND SUPPORTS ON ALL WATER PIPING (TYP.).
- 5 PROVIDE 2" PUMP WASTE BELOW FLOOR AND PIPE TO MOP SINK WITH AIR CAP

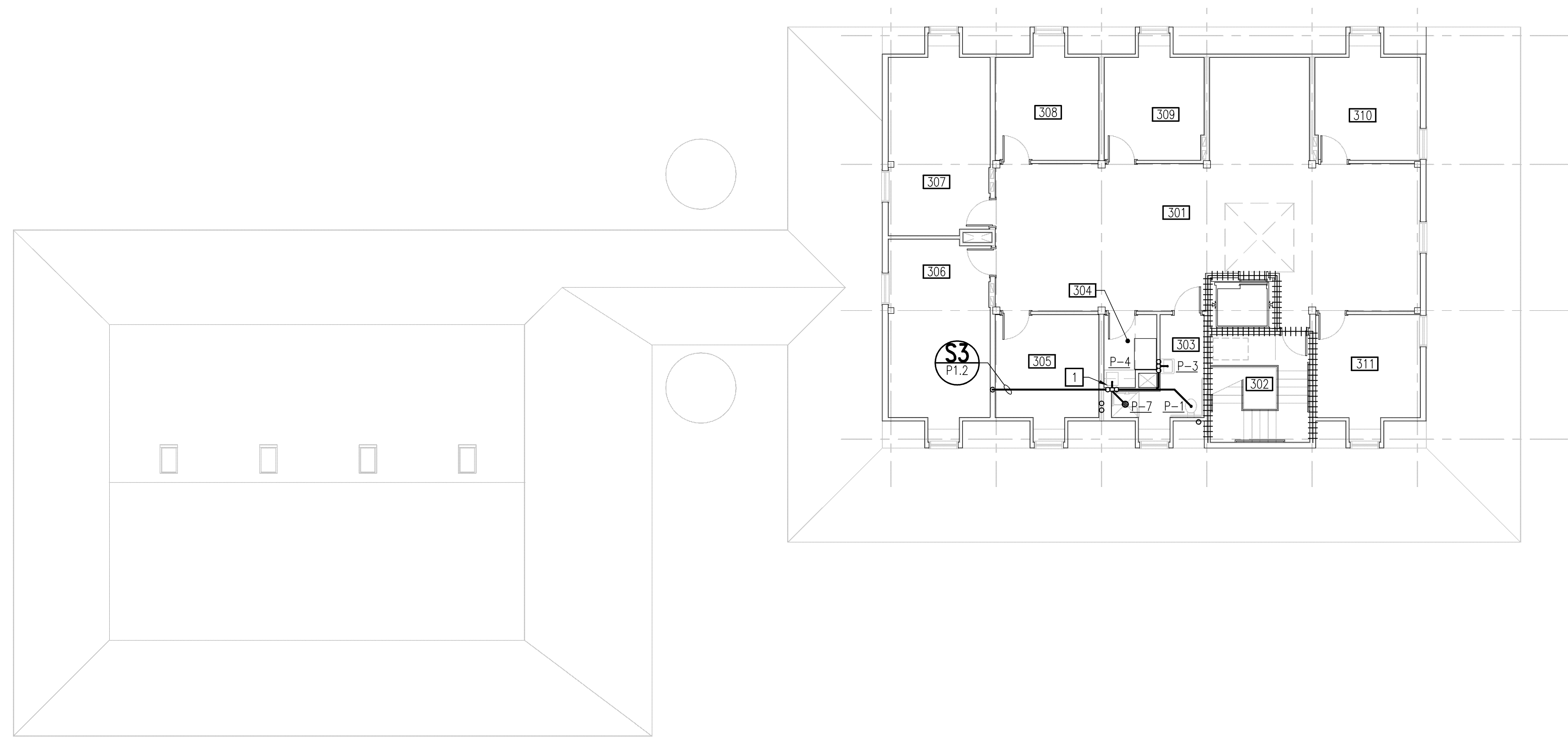


ENLARGED PLUMBING PLAN
 SCALE: 1/4" = 1'-0"

ENLARGED PLUMBING PLAN
 SCALE: 1/4" = 1'-0"

FIRST FLOOR ROOM SCHEDULE	
ROOM NUMBER	ROOM NAME
201	LOBBY
202	STAIR
203	HALL
204	BREAK ROOM
205	MECHANICAL/ELECTRICAL
206	VENDING
207	JANITOR
208	WOMEN
209	MEN
210	FILES/MAIL
211	SERVER
212	ELEVATOR EQUIPMENT
213	EOC
214	CONFERENCE





PLUMBING SECOND FLOOR PLAN
 SCALE: 1/8" = 1'-0"

NOTES THIS SHEET

- 1 PROVIDE CW AND FILTER IN CABINET FOR COFFEE MAKER OFOI

SECOND FLOOR ROOM SCHEDULE	
ROOM NUMBER	ROOM NAME
301	RECEPTION/WORK AREA
302	STAIR
303	TOILET
304	BREAK ROOM
305	PR EVENTS
306	TOWN MANAGER
307	CONFERENCE ROOM
308	DIRECTOR OF COMMUNITY DEVELOPMENT
309	BUILDING INSPECTOR
310	MANAGER'S ASSISTANT CLERK
311	PERMIT COORDINATOR



GRAPHIC SCALE(S)

